



MINISTRY OF TOURISM WILDLIFE AND ANTIQUITIES



HOTEL AND ACCOMMODATION STATISTICS SURVEY ANALYTICAL REPORT FOR 2020



THE REPUBLIC OF UGANDA

MINISTRY OF TOURISM WILDLIFE AND ANTIQUITIES



HOTEL AND ACCOMMODATION STATISTICS SURVEY ANALYTICAL REPORT FOR 2020



TABLE OF CONTENTS

iv	List of Figures
v	List of Tables
iv	GLOSSARY
• 8	CHAPTER ONE: BACKGROUND
8	INTRODUCTION
8	The Survey Objectives
8	Specific Objectives of the study
9	Scope and Coverage
9	Sample Design
11	Sampling
11	Data cleaning conditions
• 13	CHAPTER TWO
13	ROOM AND BED OCCUPANCY
13	Introduction
13	Room Occupancy rates
13	Trends and differentials in room Occupancy Rates
14	Comparative Analysis of Room Occupancy by Calendar years
16	Bed Occupancy rates
17	Differentials and Trends in Bed Occupancy Rates
18	Comparative Analysis of Bed Occupancy by Calendar years
• 20	CHAPTER THREE
20	EMPLOYEMENT IN THE ACCOMMODATION SECTOR
20	Introduction
20	Employment Status
• 21	CHAPTER FOUR:
21	SERVICED OFFERED BY ACCOMMODATION ESTABLISHMENTS
21	Introduction
21	Services offered
• 24	CHAPTER FIVE
24	CHALLENGES AND RECOMMENDATION
24	Challenges
24	Recommendations
26	Appendix
27	Table A.1

LIST OF FIGURES

- 10> Figure 1: Five sub regions of Uganda
- 13> Figure 2: Room occupancy rates for the four Quarters of 2020
- 15> Figure 3: Comparison of Room Occupancy by Calendar years, 2017-2020
- 16> Figure 4: Bed occupancy rates for the four Quarters of CY2020
- 18> Figure 5: Comparison of Bed Occupancy by Calendar years, 2017-2020
- 21> Figure 6: Services offered by accommodation establishments, 2020 (%)
- 22> Figure 7: Services offered by Hotel and Accommodation facilities in CY2020

LIST OF TABLES

11	Table 1. 1: Regional distribution of sampled accommodation facilities by major accommodation types
11	Table 1. 2: Total Distribution of Accommodation Facilities by Accommodation Type and Region, Jan to December 2020
12	Table 1. 3: Distribution of returns from Data collection
14	Table 1. 4: Room Occupancy by Calendar year (CY) Quarters and Region, 2020 (%)
14	Table 1. 5: Room Occupancy by CY Quarters and Accommodation Type, 2020 (%)
15	Table 1. 6: Room Occupancy by Month, 2018-2020
16	Table 1. 7: Room Occupancy by Region
17	Table 1. 8: Bed Occupancy by Calendar Year, Quarters and sub region, 2020 (%)
18	Table 1. 9: Bed Occupancy by F/Y Quarters and Accommodation Type, CY2020
19	Table 1. 10: Bed Occupancy by Month, 2018-2020
19	Table 1. 11: Bed Occupancy by Region
20	Table 1. 12: Average Employment in the hotel and Accommodation industry, CY2020
23	Table 1. 13: Services offered by accommodation facilities by accommodation type, 2020 (%)
27	Table 1. 14: Percentage of services offered by Accommodation Type Jan to Dec 2020
28	Table 1. 15: Bed and Breakfast Jan to Dec 2020/Numbers
32	Table 1. 16: Percentage of services offered by Region Jan to Dec 2020
32	Table 1. 17: Number of Facilities Providing Bed and Breakfast by Sub Region
35	Table 1. 18: Number of facilities by Region
36	Table 1. 19: Percentage of facilities by Region (%)
36	Table 1. 20: Occupancy Rate By Month Quarter Jan to Dec 2020
37	Table 1. 21: Occupancy Rate By Month Quarter Jan to Dec 2020
37	Table 1. 22: Number of Rooms available by Accommodation Type, Month and Quarter
37	Table 1. 23: Number of Rooms Sold out by Accommodation Type, Month and Quarter
38	Table 1. 24: Room Occupancy Rate by Accommodation Type, Month and Quarter Error! Bookmark not defined.
38	Table 1. 25: Number of Beds Available by Accommodation Type, Month and Quarter
39	Table 1. 26: Number of Beds Sold out by Accommodation Type, Month and Quarter
39	Table 1. 27: Bed Occupancy rate by Accommodation Type, Month and Quarter
40	Table 1. 28: Number of Rooms available by Sub-Region, Month and Quarter
40	Table 1. 29: Number of Rooms Sold Out by Sub-Region, Month and Quarter
40	Table 1. 30: Room Occupancy rate by Sub-Region, Month and Quarter
41	Table 1. 31: Number of Bed Nights available by Sub-Region, Month and Quarter
41	Table 1. 32: Number of Bed Nights Sold Out by Sub-Region, Month and Quarter
41	Table 1. 33: Bed Occupancy Rate by Sub-Region, Month and Quarter

LIST OF TABLES

42	Table 1. 34: Number of Room Available by Type of Room and Month
42	Table 1. 35: Number of Rooms Sold out by Type of Room and Month
43	Table 1. 36: Room Occupancy Rate by Type of Room and Month
43	Table 1. 37: Number of Beds Available by Type of Room and Month
44	Table 1. 38: Number of Beds Sold out by Type of Room and Month
44	Table 1. 39: Bed Occupancy Rate by Type of Room and Month
45	Table 1. 40: Average Employment status By Region
45	Table 1. 41: Percentage Distribution of Employment status by Region (%)
46	Table 1. 42: Average Employment status By Type of Accommodation
47	Table 1. 43: Total Average Employment status By Region
47	Table 1. 44: Total Percentage Employment status by Region (%)
47	Table 1. 45: Total Average Employment status By Type of Accommodation
47	Table 1. 46: Employment status
48	Table 1. 47: Total Employment status by Region (Number)
48	Table 1. 48: Average Employment status by type of accommodation
48	Table 1. 49: Employees by Residence Status and Type of Accommodation
49	Table 1. 50: Average Employees by Residence Status and Type of Accommodation
49	Table 1. 51: Number of Bookings made by residence status and region, Jan to Dec 2020
49	Table 1. 52: Percentage distribution of MICE Bookings by residence status and region
50	Table 1. 53: Number of Bookings in facilities by residence status and Accommodation Type
50	Table 1. 54: Percentage distribution of MICE Bookings by residence status and Accommodation Type
50	Table 1. 55: Number of MICE Bookings by Month and Accommodation Type
51	Table 1. 56: Maximum Sitting Capacity for each Conference hall by Region
51	Table 1. 57: Percentage Distribution of Sitting Capacity for each Conference hall by Region
51	Table 1. 58: Maximum Sitting Capacity for each Conference hall by Accommodation Type
51	Table 1. 59: Percentage Distribution of Sitting Capacity for each Conference hall by Region
52	Table 1. 60: Average Daily Room rate:
52	Table 1. 61: Average Daily room rate by Region
53	Table 1. 62: Revenues by Accommodation Type and Month
53	Table 1. 63: Revenues by Sub region and Month
54	Table 1. 64: Percentage of Guests
54	Table 1. 65: Effects of the Corona Virus on Accommodation Establishments
54	Table 1. 66: Mechanisms that have been adopted to Minimize the effects of the lockdown due to COVID-19 Pandemic
55	Table 1. 67: Suggestions on what Government can do to rescue Tourism Businesses and Other Sectors
55	Table 1. 68: Employment Category by sex
55	Table 1. 69: Employment by Nationality status
56	Questionnaire

GLOSSARY

The East African Community (EAC) Accommodation Facility Classification Criteria, the following type of accommodation facilities are discussed in details as below:

Vacation Hotels: These are commercial accommodation facilities/establishments located near holiday attraction areas, normally in suburbs and where majority of clients are holiday makers or leisure travelers.

Town Hotels: These are commercial accommodation establishments/facilities located within urban areas where majority of clients are business travelers. Most urban-based hotels fall under this category. They include both national and International hotels such as Sheraton Hotel, Hilton hotel, Grand Imperial hotel and many others that are located within urban areas.

Lodges: Are commercial accommodation establishments/facilities located within or near natural habitats rich in fauna and flora normally in or near conservation areas, where majority of clients are leisure or adventure seekers. Examples include Para Safari and Redchills lodges in Murchison falls National Park. Lodges differ from Vacation hotels in that vacation hotels offer more services such as conference facilities in addition to accommodation and usually located in urban centers compared to lodges.

Tented camps: Are commercial accommodation establishments of permanent, semi-permanent and/or mobile tented facilities usually located close to or within popular areas such as beaches, rivers, lakes, and protected areas like national parks, game reserves or forests.

Service Apartments, Villas and Cottages: Refer to commercial establishments/facilities mainly located in sub urban areas or country side and characterized by being detached, semidetached or in clusters of lettable units of holiday accommodation. They may or may not offer full hotel services and facilities.

Motels: Are commercial accommodation establishments located along highways or motor ways catering mainly for motorists and other highway road users

Guest Houses: Are commercial facilities/establishments that offer rooms to travelers usually not larger than bed and breakfast services, typically offering breakfast included on room rates but not licensed to serve alcoholic beverages.

CHAPTER ONE: BACKGROUND

1.0 INTRODUCTION

This report provides an overview of the hotel and accommodation sub sector within the tourism industry for the calendar year 2020 (January-December 2020) based on the Quarterly Hotel and Accommodation Survey 2020. The Quarterly Hotel and Accommodation surveys are important sources of information for measuring the performance of the accommodation sector. The results of the surveys are used to compile monthly, quarterly and annual occupancy rates, estimates the tourism satellite accounts (TSA and the Gross Domestic Product (GDP) and its components, which are used to develop and monitor government policy.

The Information from this report are also helpful in knowing areas with investment opportunities in terms of hospitality. Opportunities for investors thus include the establishment of world class accommodation and exhibition facilities that can attract major international conferences and events.

The Hotel and Accommodation Surveys 2020 was implemented under the Uganda Bureau of Statistics (UBOS) Act, 1998. It is a survey conducted jointly by the Ministry of Tourism, Wildlife and Antiquities (MTWA) together with the Uganda Bureau of Statistics (UBOS) on a quarterly basis via quarterly sample surveys. This is in line with the MTWA extended strategic plan statistics (2018/19-2019/20) as an activity.

To allow meaningful comparison of year on year trends, historical data from past data is included in this report.

1.2 The Survey Objectives

The main objective of the survey was to generate high quality and timely quantitative data on accommodation facilities to monitor the performance of the accommodation sector in the country.

1.2.1 Specific Objectives of the study

The specific objectives of the survey are;

- i) Compute room and bedroom occupancy rates.
- ii) Estimate the number of people engaged in the accommodation sector by gender and employment under the following categories (Management, Food & Beverages, Housekeeping Section and Interns (Trainees).
- iii) Estimate the number of bedrooms and beds in the country by accommodation facility type.

- iv) Estimate incomes from the accommodation sub sector.
- v) Obtain and update the list of accommodation facilities by administration units (District, Sub county and Parish)
- vi) Establish the capacity of conference facilities in the country.
- vii) Build asset of indicators that will be measured overtime to assess the trend of the accommodation sub sector.

1.3 Scope and Coverage

The 2020 Hotel and Accommodation Survey was nationally representative covering a total of 93 districts across the country over the two data collection periods. The 2020 Hotel and Accommodation Survey collected data using reference period of the twelve months of the calendar year of 2020 with presentation availed for each of the two periods of the year.

The survey will cover six broad areas including:

- 1) the location of the accommodation facility with detailed Administrative Units,
- 2) Services offered by the accommodation facilities,
- 3) Meetings incentives, conferences and exhibitions (MICE) statistics,
- 4) Employment status by gender and nationality,
- 5) Occupancy rates and;
- 6) Type of establishment.

1.4 Sample Design

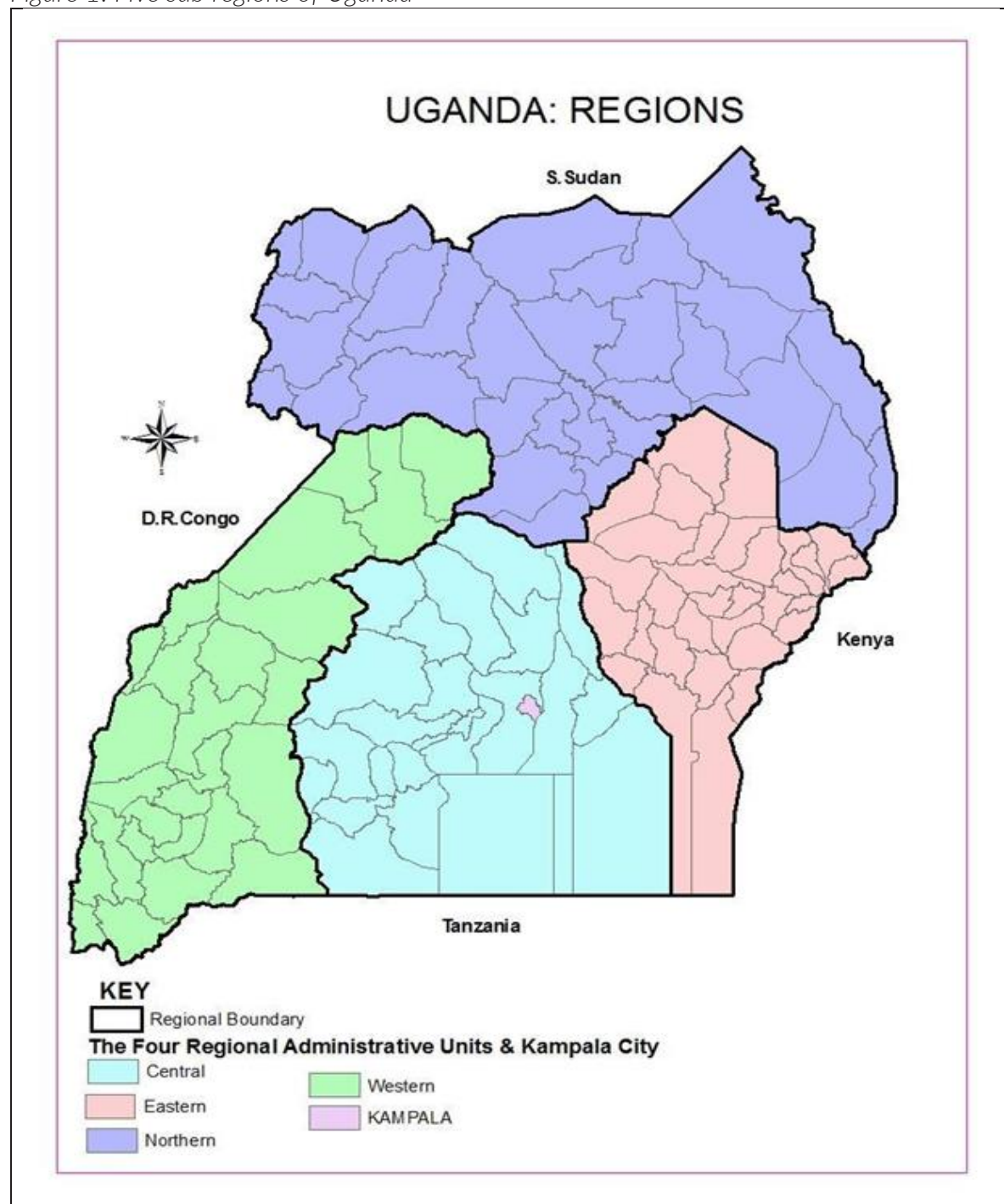
The 2020 Hotel and Accommodation Survey sample was designed to generate reliable estimates of key accommodation indicators at national and the five sub-regional levels. A total of 933 establishments were selected during the two (2) data collection periods i.e; January to June 2020 (500 establishments) and July to December 2020 (433 establishments).

Because of lack of a comprehensive grading and classification of the accommodation facilities in the country, the sample design was based upon the number of rooms and the accommodation type against the preferred international standard of categorizing hotels and related establishments by “Stars”

The list of hotel accommodation facilities were first grouped by sub-region. Within each of the sub-regions, the large establishments (those with 50+ rooms) were chosen with certainty and added to a sample of small establishments (those with Accommodation less than 50 rooms). The small establishments were drawn using a probability proportion to size (PPS) using Systematic Random Sampling. The response rates for the three different survey periods are presented in the Table 1.1 and Table 1.3. The 5 sub-regions of Uganda for

which estimated are provided for in the Hotel and Accommodation Survey 2020 are indicated in Figure 1

Figure 1: Five sub regions of Uganda



1.4.1 Sampling

Table 1. 1: Regional distribution of sampled accommodation facilities by major accommodation types

Region	Central	Eastern	Kampala	Northern	Western	Total
Apartment	-	-	6	-	2	8
Cottage	3	-	-	-	5	8
Guest House	68	48	52	64	64	296
Hostel/Dormitory	-	-	1	3	2	6
Lodge	3	9	-	1	34	47
Motel	9	1	8	1	1	20
Others	-	-	-	12	4	16
Tented Camp	-	-	-	-	2	2
Town Hotel	66	40	118	37	82	343
Vacation Hotel	8	9	19	4	13	53
Total	157	107	204	122	209	799

Source: Ministry of Tourism, Wildlife and Antiquities

The data indicate slightly higher percentages of Guesthouses and Town hotels than any other accommodation types. A remarkably high proportion of accommodation types were more recorded in the western and Kampala sub regions. The distribution differs substantially by regions, with fewer accommodation types in Eastern and Northern regions

Table 1. 2: Total Distribution of Accommodation Facilities by Accommodation Type and Region, Jan to December 2020

Region	Apartment	Cottage	Guest House	Hostel/Dormitory	Lodge	Motel	Others	Tented Camp	Town Hotel	Vacation Hotel	Total
Central	0	2	43	0	2	6	0	0	42	5	100
Eastern	0	0	45	0	8	1	0	0	37	8	100
Kampala	3	0	25	0	0	4	0	0	58	9	100
Northern	0	0	52	2	1	1	10	0	30	3	100
Western	1	2	31	1	16	0	2	1	39	6	100

Source: Ministry of Tourism, Wildlife and Antiquities

1.4.2 Data cleaning conditions:

To ensure data consistency, datasets were cleaned for duplicates. Below are the criteria used:

- For dataset 1, there were 3 duplicate records (using the estcode) in July. This analysis therefore cleaned out duplicates by deletion. All the duplicates were deleted from both dataset one and dataset 2. This implies that 6 records were deleted from dataset 1.
- Data set 2 also had duplicates that were treated with the same criteria. All ids deleted from dataset1 were also deleted from dataset2. Dataset 2 had 67 duplicate records on estcode hence the need to make this a unique dataset. The dataset2 duplicates were deleted maintaining the record that had the highest number of counts of room usage.

Table 1. 3: Distribution of returns from Data collection

Result code	Response status	Percentage
Closed	98	11%
Continue to Complete	798	86%
Incomplete	3	0%
Refused	27	3%
Transferred to another location	7	1%
Total	933	100%

Source: Ministry of Tourism, Wildlife and Antiquities

The 2020 Hotel and Accommodation Survey data focused on mainly 798 establishments that provided information about the hotel statistics. 11 percent were found to have closed, 3 percent refused to respond to the questionnaire while 1 percent of the establishments had transferred to another location.



CHAPTER TWO

ROOM AND BED OCCUPANCY

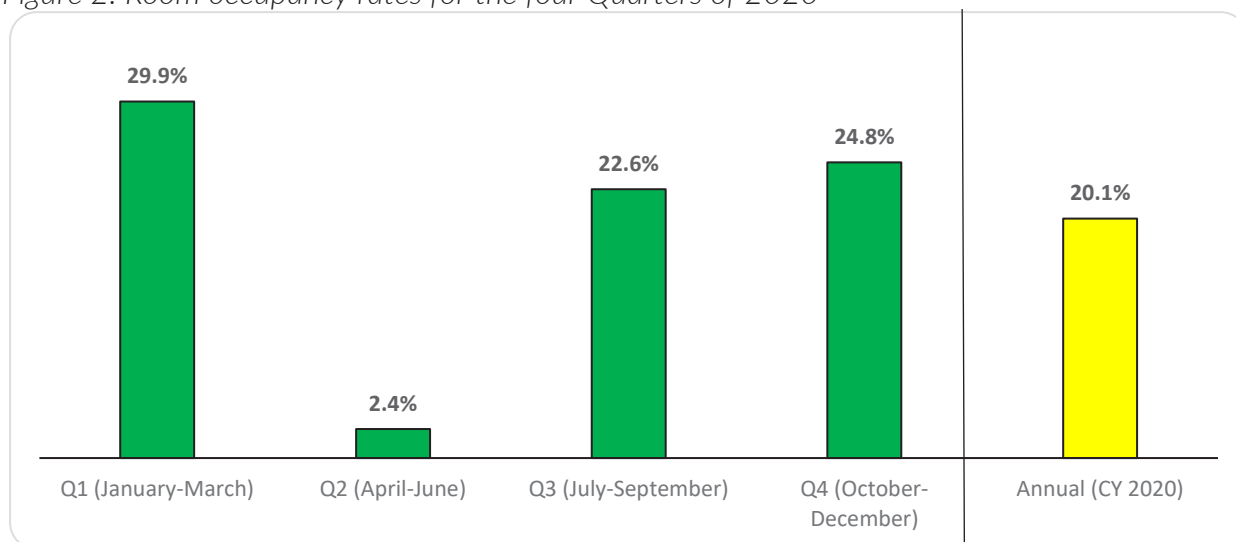
2.1 Introduction

This chapter presents information on room and bed occupancy rates disaggregated by the four quarters of the year 2020. Details are also provided by region and accommodation type. The Room occupancy rate is the ratio between occupied rooms and available rooms whereas the bed occupancy rate refers to the proportion of beds occupied in relation to the available beds.

2.2 Room Occupancy rates

As showed in Figure 2, the overall room occupancy rate for the calendar year 2020 was 20.1 percent being highest in the first quarter (January -March) and lowest at 2.4 percent in the second quarter (April-June 2020. This is the lowest ever Room Occupancy recorded in the last 10 years. This was largely due to the COVID-19 outbreak that shut down Tourism for almost half of the CY2020.

Figure 2: Room occupancy rates for the four Quarters of 2020



Source: Ministry of Tourism, Wildlife and Antiquities

2.2.1 Trends and differentials in room Occupancy Rates

Table 1.4 shows that nationally the room occupancy rate dropped significantly from 30 percent during the period January-March 2020 to 25 percent for the period October – December 2020. The room occupancy rates did not differ much by region during the reference period. The highest room occupancy rate in 2020 (24.8%) was registered in the Northern region while the lowest (18%) was registered in the Central region. Kampala room occupancy rate decreased from 29.1 percent in the first quarter of CY2020 to 23.2 percent in the fourth quarter of calendar year 2020.

The western sub-region had a room occupancy rate of 22.5 percent overall, posting the highest decline in room occupancy rate compared to the other sub-regions. The room occupancy rate for the sub-region declined from 48.2 percent in the 1st quarter of CY2020 to 21.8 percent in the 4th quarter of CY2020.

Generally, Occupancy rates have been low for all regions throughout the calendar year 2020 due to restrictions in movements and lockdowns caused by the COVID-19 Pandemic.

Table 1. 4: Room Occupancy by Calendar year (CY) Quarters and Region, 2020 (%)

Region	Q1 (January-March)	Q2 (April-June)	Q3 (July-September)	Q4 (October-December)	Annual (2020)
Central	21.7%	1.2%	23.4%	27.6%	18.0%
Eastern	27.9%	4.4%	28.0%	21.3%	20.6%
Kampala	29.1%	2.7%	18.1%	23.2%	18.2%
Northern	22.2%	0.8%	38.5%	36.8%	24.8%
Western	48.2%	3.0%	17.1%	21.8%	22.5%
Total	29.9%	2.4%	22.6%	24.8%	20.1%

Source: Ministry of Tourism, Wildlife and Antiquities

Table 1.5 presents the room occupancy rates by the type of establishments for the four Calendar year quarters of CY2020. The highest room occupancy rate in CY2020 was 57.3 percent for Tented Camp, this was followed by Hostels/Dormitories at 28.2 percent while Town hotels had the lowest room occupancy rate of 18.2 percent.

An overall comparison of room occupancy rates in the 1st quarter of CY2020 and the 4th quarter of CY 2020 indicates an overall decline of nearly ten percentage points.

Table 1. 5: Room Occupancy by CY Quarters and Accommodation Type, 2020 (%)

	Q1 (January-March)	Q2 (April-June)	Q3 (July-September)	Q4 (October-December)	Annual (2020)
Apartment	21.7%	18.7%	39.9%	42.9%	23.3%
Cottage	48.9%	0.0%	14.2%	33.4%	24.2%
Guest House	37.9%	1.2%	26.7%	29.5%	23.9%
Hostel/Dormitory	53.1%	0.5%	30.1%	44.5%	28.2%
Lodge	41.9%	6.8%	25.4%	36.8%	27.2%
Motel	36.4%	5.2%	27.6%	41.6%	28.0%
Others	19.1%	0.0%	21.4%	22.5%	16.9%
Tented Camp	86.4%	0.0%	54.7%	82.6%	57.3%
Town Hotel	25.3%	2.5%	21.4%	22.2%	18.2%
Vacation Hotel	33.1%	1.7%	19.8%	26.7%	20.1%
Total	29.9%	2.4%	22.6%	24.8%	20.1%

Source: Ministry of Tourism, Wildlife and Antiquities

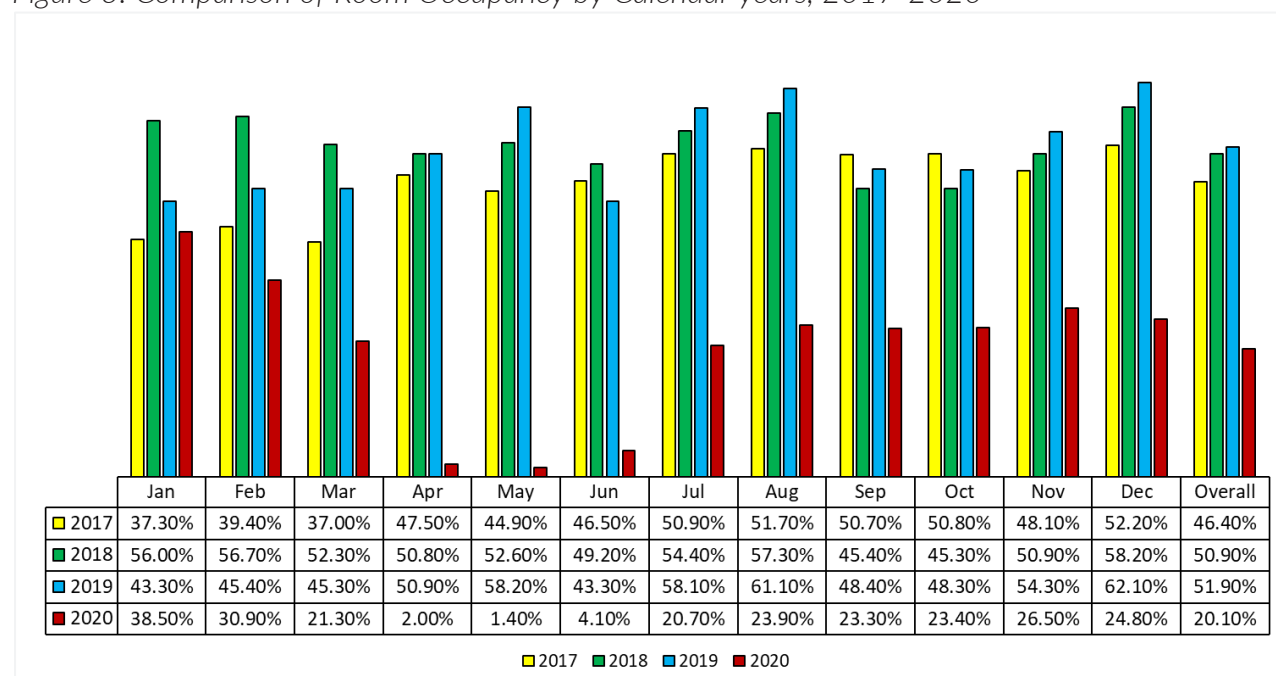
2.2.2 Comparative Analysis of Room Occupancy by Calendar years

Prior to the COVID-19 Pandemic, Room Occupancy among Hotels and Accommodation facilities was on an increasing trend rising from a room occupancy of 46.4% in 2017 to 51.9% in 2019, an increase of 5.5 percentage points.

In CY2020, the Sector was hit by the Pandemic that led to a huge drop in occupancy from 51.9% in 2019 to 20.1% in CY2020, a decline of 31.8 percentage points. This is the worst room occupancy ever recorded in one single year.

Room occupancy hit its lowest point in the months of April (2%), May (1.4%) and June (4.1%) when Restrictions in movement and Lockdown were implemented in the country as a measure to curb COVID-19. However, Room Occupancy improved from July to December 2020 but continued to fluctuate between 20% and 27%.

Figure 3: Comparison of Room Occupancy by Calendar years, 2017-2020



Source: Ministry of Tourism, Wildlife and Antiquities

Looking at monthly room Occupancy, Results show that in 2020, Room occupancy declined throughout the year with an overall decline of 31.8 percentage points in 2020 over 2019. The month of May registered the highest decline in room occupancy declined of 56.8 percentage points. April and June also recorded large declines in room occupancy (declines of 48.9 and 39.2 percentage points respectively) as shown in the Table 1.6 below;

Table 1. 6: Room Occupancy by Month, 2018-2020

Room Occupancy	2018	2019	2020	%Change in Room Occupancy 2020-2019
Jan	56.0%	43.3%	38.5%	-4.8%
Feb	56.7%	45.4%	30.9%	-14.5%
Mar	52.3%	45.3%	21.3%	-24.0%
Apr	50.8%	50.9%	2.0%	-48.9%
May	52.6%	58.2%	1.4%	-56.8%
Jun	49.2%	43.3%	4.1%	-39.2%
Jul	54.4%	58.1%	20.7%	-37.4%
Aug	57.3%	61.1%	23.9%	-37.2%
Sep	45.4%	48.4%	23.3%	-25.1%
Oct	45.3%	48.3%	23.4%	-24.9%
Nov	50.9%	54.3%	26.5%	-27.8%
Dec	58.2%	62.1%	24.8%	-37.3%
Overall	50.9%	51.9%	20.1%	-31.8%

Source: Ministry of Tourism, Wildlife and Antiquities

Regional variations in room occupancy exist. In calendar year 2020, room occupancy was highest in the Northern and Western sub regions (24.8 and 22.5 percent respectively). However all regions recorded declines in room occupancy in CY2020 with the Eastern Region recording the highest decline in room occupancy, a 35.6 percentage points decline. See Table 1.7 below;

Table 1. 7: Room Occupancy by Region

Room Occupancy	2018	2019	2020	%Change in Room Occupancy
Central	48.7%	49.2%	18.0%	-31.2%
Eastern	54.9%	56.2%	20.6%	-35.6%
Kampala	52.0%	53.1%	18.2%	-34.9%
Northern	47.6%	47.4%	24.8%	-22.6%
Western	52.6%	53.7%	22.5%	-31.2%
Overall	50.9%	51.9%	20.1%	-31.8%

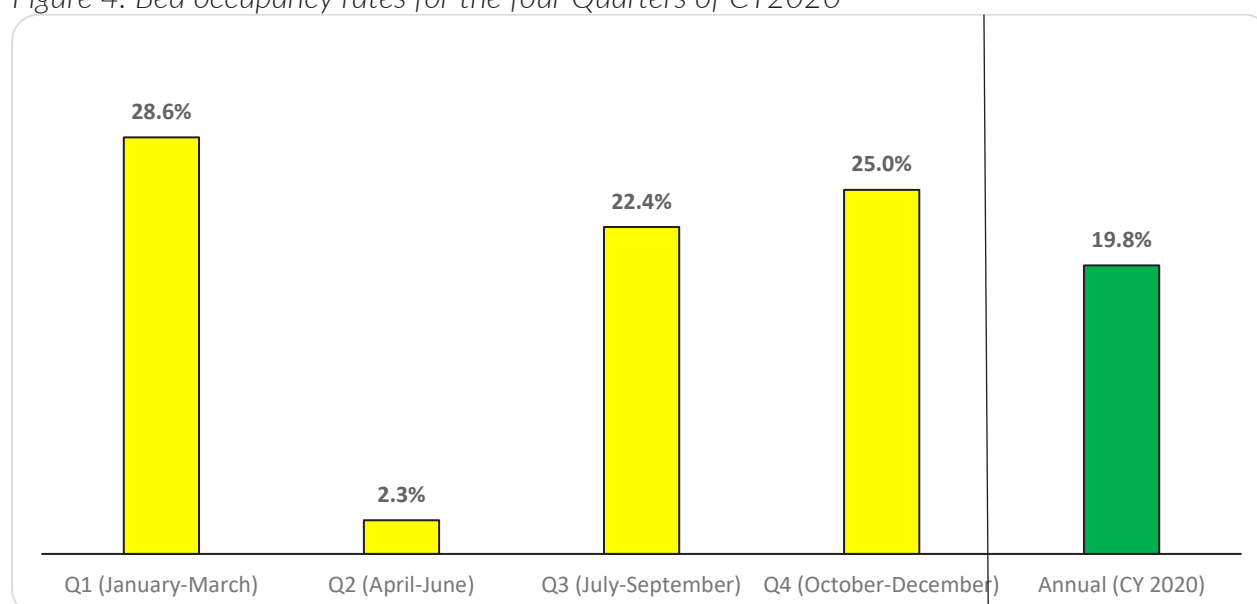
Source: Ministry of Tourism, Wildlife and Antiquities

2.3 Bed Occupancy rates

The information in Figure 4 reveals that overall the bed occupancy rate for CY2020 in Uganda was 19.8 percent with the highest being registered in 1st quarter (January-March 2020) of CY 2020 and the lowest in 2nd quarter (April-June) of the CY 2020. This was largely attributed to the COVID-19 Pandemic.

There was a decline in the bed occupancy rates between the first quarter of the calendar year 2020 (January'20-March'20) and the fourth quarter of the CY 2020 (October'20-December'20) by 8.8 percentage points.

Figure 4: Bed occupancy rates for the four Quarters of CY2020



Source: Ministry of Tourism, Wildlife and Antiquities

2.3.1 Differentials and Trends in Bed Occupancy Rates

During the calendar year 2020, all regions except the Northern and central sub regions registered declines in the bed occupancy rates between 1st quarter of CY2020 and the 4th quarter of CY2020 with the highest decline recorded in Western Region in excess of 25 percentage points.

The bed occupancy rate for Northern sub-region increased from 21.4 percent during the 1st quarter of the calendar year of 2020 to 35.5 percent during the 4th quarter of the calendar year 2020 posting a 14.1 percentage point increment. Similarly, the bed occupancy of the Central sub-region increased from 22.3% percent during the 1st quarter of the calendar year of 2020 to 28.6 percent during the 4th quarter of the calendar year 2020 posting a 6.3 percentage point increment. See Table 1.8 below;

Table 1. 8: Bed Occupancy by Calendar Year, Quarters and sub region, 2020 (%)

	Q1 (January-March)	Q2 (April-June)	Q3 (July-September)	Q4 (October-December)	Annual (2020)
Central	22.3%	1.4%	23.5%	28.6%	18.6%
Eastern	22.2%	4.1%	25.8%	21.3%	18.9%
Kampala	26.9%	2.5%	18.9%	23.9%	17.7%
Northern	21.4%	0.8%	37.8%	35.5%	25.2%
Western	46.7%	2.5%	16.4%	21.3%	22.0%
Total	28.6%	2.3%	22.4%	25.0%	19.8%

Source: Ministry of Tourism, Wildlife and Antiquities

Table 1.9 shows information on Bed Occupancy rate by type of Accommodation Establishment. The highest bed occupancy rate was at 50.3 percent for Hostel/Dormitory while the lowest (17.6%) was for Apartments. In comparison with bed occupancy rates in the fourth quarter of CY2020, increases of 30.7 percentage points and 7.3 percentage points were registered for Apartments and Motels respectively.

However, on the contrary, the bed occupancy for reduced for all Accommodation types between the 1st quarter of the calendar year of 2020 to 28.6 percent during the 4th quarter of the calendar year 2020 apart from Motels and Apartments with Hotels/Dormitory posting the largest decline of 42.3 percentage points followed by cottages and tented camps which decreased by 13.8 percentage points and 13.6 percentage points respectively.

Table 1. 9: Bed Occupancy by F/Y Quarters and Accommodation Type, CY2020

	Q1 (January- March)	Q2 (April- June)	Q3 (July- September)	Q4 (October- December)	Annual (2020)
Apartment	14.6%	11.0%	43.1%	45.3%	17.6%
Cottage	43.8%	0.0%	11.6%	29.9%	21.4%
Guest House	32.0%	1.2%	27.5%	30.0%	23.3%
Hostel/Dormitory	70.3%	0.7%	23.3%	28.0%	33.5%
Lodge	41.6%	5.1%	30.5%	39.6%	28.7%
Motel	35.8%	5.1%	26.9%	43.1%	28.7%
Others	16.9%	0.0%	19.0%	20.1%	14.6%
Tented Camp	86.4%	0.0%	34.3%	72.7%	50.3%
Town Hotel	24.7%	2.5%	20.9%	22.0%	17.8%
Vacation Hotel	31.4%	1.5%	18.8%	25.1%	19.1%
Total	28.6%	2.3%	22.4%	25.0%	19.8%

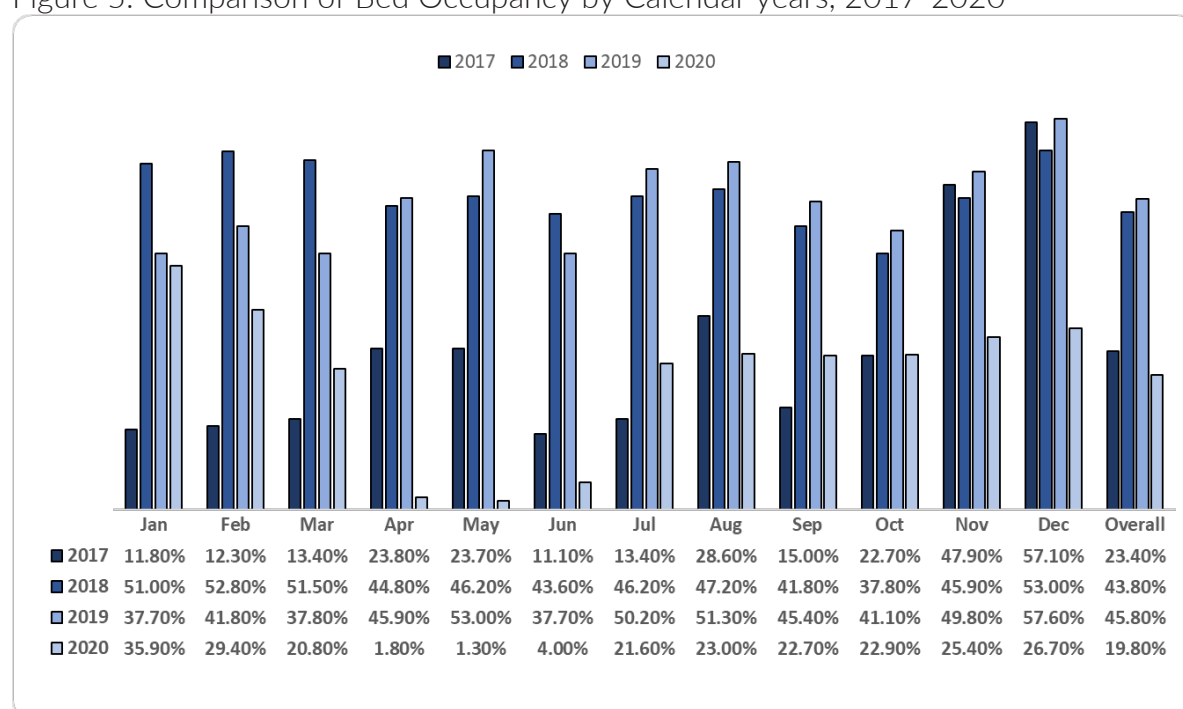
Source: Ministry of Tourism, Wildlife and Antiquities

2.3.2 Comparative Analysis of Bed Occupancy by Calendar years

Bed Occupancy followed a similar pattern like the Room Occupancy, falling 26 percentage points, from 45.8% in Cy2019 to 19.8% in CY2020. Bed Occupancy levels improved after June 2020 but fluctuated between 20% and 27% for the rest of the year.

Prior to COVID-19, the Bed Occupancy rates were also on an increasing trend rising from 23.4% in 2017 to 45.8 percent in 2019.

Figure 5: Comparison of Bed Occupancy by Calendar years, 2017-2020



Source: Ministry of Tourism, Wildlife and Antiquities

Bed Occupancy levels per month also followed a similar pattern with the monthly Room Occupancy levels with an overall decline of 26 percentage points in 2020. May, April and June that were characterized by lockdowns registered the highest declines in bed occupancy in calendar year 2020 (declines of 51.7, 44.1 and 33.7 percentage points). See Table 1.10 below;

Table 1. 10: Bed Occupancy by Month, 2018-2020

Bed Occupancy	2018	2019	2020	%Change in Bed Occupancy 2020-2019
Jan	51.0%	37.7%	35.9%	-1.8%
Feb	52.8%	41.8%	29.4%	-12.4%
Mar	51.5%	37.8%	20.8%	-17.0%
Apr	44.8%	45.9%	1.8%	-44.1%
May	46.2%	53.0%	1.3%	-51.7%
Jun	43.6%	37.7%	4.0%	-33.7%
Jul	46.2%	50.2%	21.6%	-28.6%
Aug	47.2%	51.3%	23.0%	-28.3%
Sep	41.8%	45.4%	22.7%	-22.7%
Oct	37.8%	41.1%	22.9%	-18.2%
Nov	45.9%	49.8%	25.4%	-24.4%
Dec	53.0%	57.6%	26.7%	-30.9%
Overall	43.8%	45.8%	19.8%	-26.0%

Source: Ministry of Tourism, Wildlife and Antiquities

Just like Room Occupancy, Regional bed occupancy levels in CY2020 followed a similar pattern. The lowest decline in room occupancy was recorded in the Northern sub region, a reduction of 17.4 percentage points as shown in the Table 1.11 below;

Table 1. 11: Bed Occupancy by Region

Bed space Occupancy	2018	2019	2020	%Change in Bed Occupancy 2020-2019
Central	42.9%	43.1%	18.6%	-24.5%
Eastern	50.3%	50.7%	18.9%	-31.8%
Kampala	47.7%	47.8%	17.7%	-30.1%
Northern	42.0%	42.6%	25.2%	-17.4%
Western	44.8%	44.9%	22.0%	-22.9%
Overall	43.8%	45.8%	19.8%	-26.0%

Source: Ministry of Tourism, Wildlife and Antiquities

CHAPTER THREE: EMPLOYMENT IN THE ACCOMMODATION SECTOR

3.1 Introduction

The Hotel and Accommodation statistics surveys collect information on employment categories for both nationals and non-nationals. This information is used to assess the number of persons employed in the hotel accommodation sector. The output is also among the data used to develop the tourism satellite accounts.

3.2 Employment Status

Overall, in 2020 the national employment average was 7 employees per accommodation establishment with the females having an average of 8 employees compared to the male with an average of 6 employees. Generally, employment in the hotel and accommodation industry is female dominated.

Disaggregation by employment category shows that on average more males (ratio 2:1) were in the management positions compared to females (ratio of 1:2). However, the average number of females employed in the Food and Beverages category (ratio 2:3) and Housing keeping (ratio 1:3) was more than that of males. See Table 1.12 below;

Table 1. 12: Average Employment in the hotel and Accommodation industry, CY2020

Employment Category:	Total	
	Male	Female
Management	2	1
Front Office	1	1
Foods and Beverages	2	3
House keeping	1	3
Trainees (Interns)	0	1
Total	6	8

Source: Ministry of Tourism, Wildlife and Antiquities

CHAPTER FOUR: SERVICED OFFERED BY ACCOMMODATION ESTABLISHMENTS

4.0 Introduction

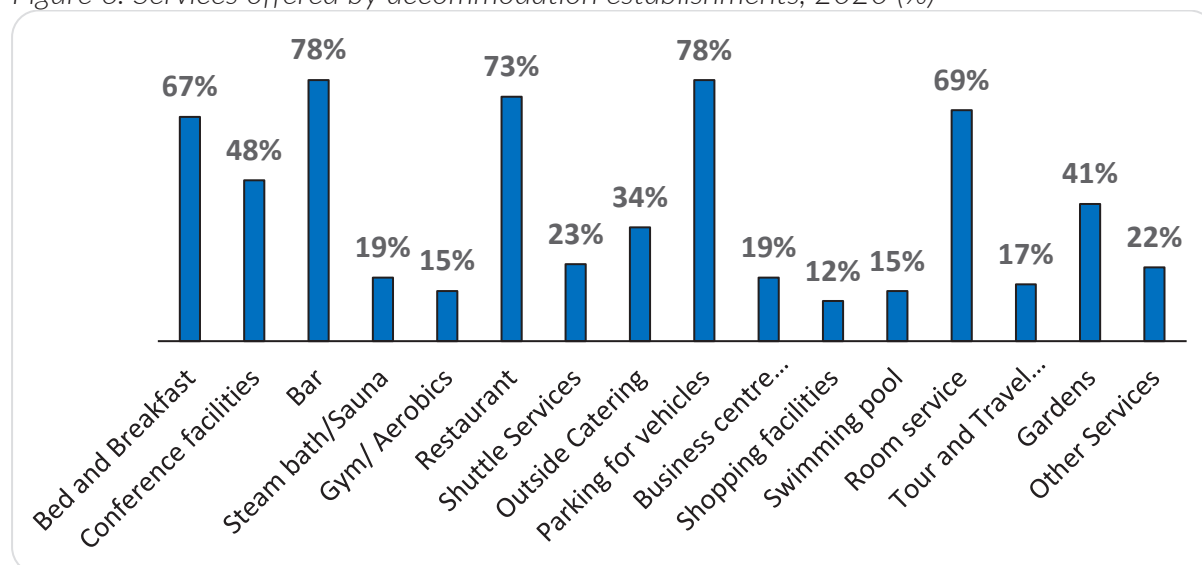
Accommodation facilities offer a number of services some of which are included on the accommodation bill while others are paid independently. The Hotel and Accommodation Statistics Survey included questions to ascertain the services offered by the targeted undertakings.

4.1 Services offered

Figure 6 shows that some services are more offered in accommodation facilities than others. The bar services (78%), Vehicle Parking (78%), Restaurant (73%), Room service (67%) and bed and breakfast (67%) were being offered by more than half of the accommodation facilities. Since 67% (close to two thirds) offer bed and breakfast, this implies that about one thirds (33%) offer only bed without breakfast.

Conference facilities are offered by close to half of the hotel and accommodation establishments (48%). However, shopping facilities (12%), Swimming pool (15%) and Gym/aerobics services (15%) are the least offered in majority of accommodation facilities in Uganda as shown below.

Figure 6: Services offered by accommodation establishments, 2020 (%)



Source: Ministry of Tourism, Wildlife and Antiquities

Regional variations exist in terms of what the establishments offer. Figure 7 shows that bed and breakfast was offered by a high proportion of establishments in Kampala (77%) and the Eastern (75%), however these services were poorly offered in the Northern region (54%).

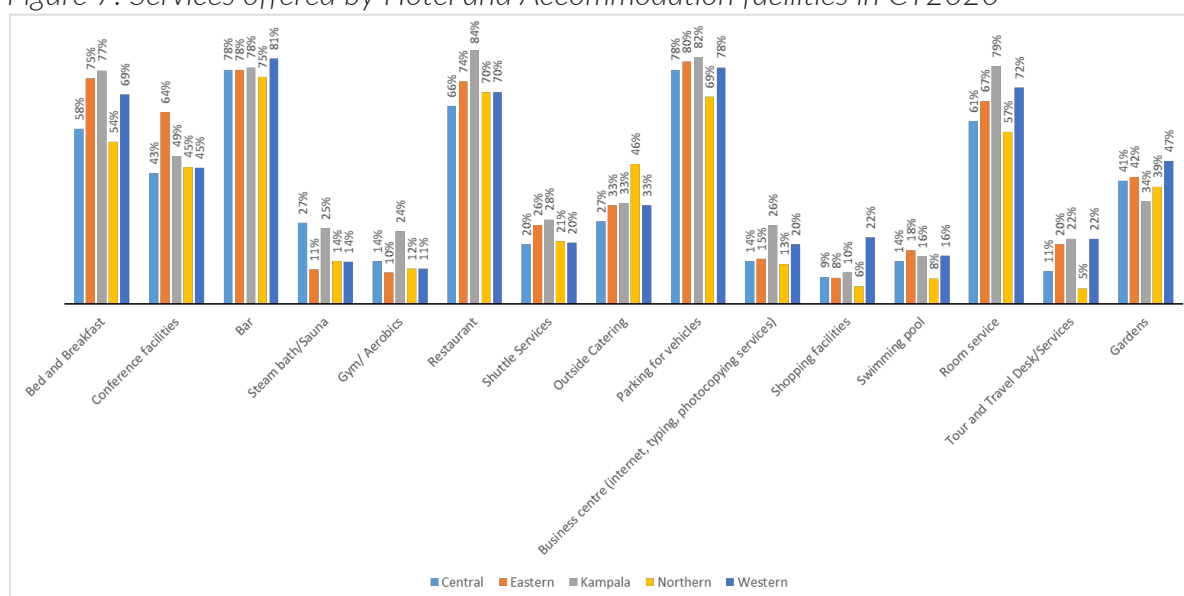
Bar services were offered in most establishments across the country but the Western region had the highest coverage of 81 percent.

Parking services also registered wide coverage in all regions with an overall percentage of 78 percent. Kampala city had the biggest coverage in all the sampled facilities with 82 percent emerging the best among all the regions in terms of coverage followed Eastern Region at 80%.

Room service registered a fairly wide coverage in all regions with an overall percentage of 69 percent. Kampala had the highest percentage of establishments (79 percent) offering room service compared to the other regions followed by western region at 72%.

Restaurant services also recorded a wide coverage in all regions with an overall percentage of 73 percent. Kampala sub region had the highest coverage of establishments offering restaurant services (84%) followed by Eastern region at 74 percent.

Figure 7: Services offered by Hotel and Accommodation facilities in CY2020



Source: Ministry of Tourism, Wildlife and Antiquities

As showed in Table 1.13 below: Town and vacation hotels generally provide most of the accommodation related services except for shopping (17% and 26% respectively) and swimming pool facilities (19% and 30% respectively),

Table 1.13: Services offered by accommodation facilities by accommodation type, 2020 (%)

Service Offered	MAJOR ACCOMMODATION TYPE: Percentage of services offered by Accommodation Type (Yes)										Total
	Apartment	Cottage	Guest House	Hostel/ Dormitory	Lodge	Motel	Others	Tented Camp	Town Hotel	Vacation Hotel	
Bed and Breakfast	13%	100%	35%	50%	81%	60%	19%	50%	93%	94%	67%
Conference facilities	13%	63%	18%	17%	21%	30%	19%	0%	78%	77%	48%
Bar	13%	75%	70%	0%	87%	85%	63%	100%	87%	87%	78%
Steam bath/Sauna	13%	13%	5%	0%	6%	20%	0%	0%	32%	32%	19%
Gym/ Aerobics	38%	25%	2%	17%	2%	10%	0%	0%	27%	25%	15%
Restaurant	13%	88%	45%	33%	87%	75%	81%	50%	95%	94%	73%
Shuttle Services	13%	38%	2%	17%	30%	10%	6%	0%	37%	49%	23%
Outside Catering	25%	13%	15%	17%	6%	20%	25%	0%	56%	40%	34%
Parking for vehicles	88%	88%	58%	67%	89%	75%	63%	100%	91%	98%	78%
Business centre (internet, typing, photocopying services)	0%	25%	1%	17%	21%	15%	0%	0%	31%	38%	19%
Shopping facilities	0%	25%	2%	17%	34%	0%	0%	50%	17%	26%	12%
Swimming pool	25%	13%	1%	0%	53%	5%	0%	50%	19%	30%	15%
Room service	13%	100%	43%	17%	81%	70%	19%	50%	90%	91%	69%
Tour and Travel	13%	63%	2%	17%	28%	10%	6%	50%	25%	32%	17%
Desk/Services											
Gardens	13%	88%	16%	0%	55%	30%	25%	50%	56%	74%	41%
Other Services	25%	38%	8%	17%	38%	35%	6%	0%	29%	36%	22%

Source: Ministry of Tourism, Wildlife and Antiquities

CHAPTER FIVE: CHALLENGES AND RECOMMENDATION

5.1 Challenges

- i) Due to the old frame, some establishments have changed location names and accommodation status say from guest houses to full hotel facilities and others have transferred from their previous locations.
- ii) The mode of communication was extremely hard given the language barrier issue.
- iii) Hotel owners are unwilling to give out information on occupancy for fear of the high taxes that might follow.
- iv) In terms of location, some accommodation facilities didn't have sign posts to enable easy accessibility during field.
- v) Most of these hotels and guest houses are faced by high taxes levied on them by local authorizes as claimed by them.
- vi) Tracing these hotels especially for the first time in the area made work complicated since it consumed time
- vii) Some managers' claim that this information that is collected will in one way be used by the revenue office and hence charged high taxes on the establishment.
- viii) Some managers are negatively biased with the government and therefore do not want anything to do with it. They claim that their businesses are private owned and giving information to the government will not in any way benefit them.
- ix) Some establishments did not have the data that was required as their way of handling data was different from how the exercise wanted i.e. many don't have disaggregated data of the number of residents in their establishment nationals and non-nationals, their data was aggregated
- x) Some establishments lacked records for previous months/year. They didn't have records due to change in management hence making it difficult to collect data from them.

5.2 Recommendations

- i) Stakeholders have to go ahead to use different media like Television and Radios to sensitive hotel owners about the importance of the survey and the implications of not providing the necessary information.
- ii) Identification cards should be issued to field workers before they start the exercise to avoid issues of proof of identity. This was evidenced in some establishments where hotel managers asked for IDs for the organization not National Identity cards since most people possess them.

- iii) Sampled lists should be up to date to avoid endless movements and easy allocation of the establishments (updating of the sampling frame).
- iv) The issue of call backs will be well handled if more time is allocated to the data collection exercise since most times the hotel managers reschedule call backs according to the time they have.
- v) Visiting of the town clerks, CAOs and district commercial officers should be done ahead of the data collection exercise to avoid cases of colliding when one has not yet received the letter from the respective person and he or she need to enumerate a particular establishment with the letter of permission.
- vi) Big establishments should always be contacted prior to the enumeration to minimize the risks of refusal and endless call-backs
- vii) It is also necessary to explore the possibility of combining computer assisted personal interviewing mode with sharing the questionnaire early enough with the respondent through the necessary communication channels like the internet. Those respondents who may find it convenient to fill in questionnaire through a self-interview and sending it back to MTWA through mail or any other electronic channel should be allowed to do so.

Appendix

Table A.1

Table 1.14: Percentage of services offered by Accommodation Type Jan to Dec 2020

Services	Apartment	Cottage	Guest House	Hostel/ Dormitory	Lodge	Motel	Others	Tented Camp	Town Hotel	Vacation Hotel	Total
Bed and Breakfast	1	8	105	3	38	12	3	1	318	50	539
Conference facilities	1	5	52	1	10	6	3	-	266	41	385
Bar	1	6	207	-	41	17	10	2	297	46	627
Steam bath/Sauna	1	1	15	-	3	4	-	-	110	17	151
Gym/Aerobics	3	2	5	1	1	2	-	-	93	13	120
Restaurant	1	7	132	2	41	15	13	1	325	50	587
Shuttle Services	1	3	7	1	14	2	1	-	128	26	183
Outside Catering	2	1	43	1	3	4	4	-	191	21	270
Parking for vehicles	7	7	173	4	42	15	10	2	311	52	623
Business centre	-	2	4	1	10	3	-	-	108	20	148
Shopping facilities	-	2	5	1	16	-	-	1	58	14	97
Swimming pool	2	1	4	-	25	1	-	1	66	16	116
Room service	1	8	126	1	38	14	3	1	308	48	548
Tour and Travel	1	5	6	1	13	2	1	1	86	17	133
Gardens	1	7	48	-	26	6	4	1	192	39	324
Others	2	3	24	1	18	7	1	-	101	19	176
Total	25	68	956	18	339	110	53	11	2,958	489	5,027

Source: Ministry of Tourism, Wildlife and Antiquities

Table 1.15: Bed and Breakfast Jan to Dec 2020/Numbers

[[1]]			
q4aa	No	Yes	Total
-----	----	----	-----
Apartment	7	1	8
Cottage	0	8	8
Guest House	191	105	296
Hostel/Dormitory	3	3	6
Lodge	9	38	47
Motel	8	12	20
Others	13	3	16
Tented Camp	1	1	2
Town Hotel	25	318	343
Vacation Hotel	3	50	53
[[2]]			
q4ab	No	Yes	Total
-----	----	----	-----
Apartment	7	1	8
Cottage	3	5	8
Guest House	244	52	296
Hostel/Dormitory	5	1	6
Lodge	37	10	47
Motel	14	6	20
Others	13	3	16
Tented Camp	2	0	2
Town Hotel	77	266	343
Vacation Hotel	12	41	53
q4ac	No	Yes	Total
-----	----	----	-----
Apartment	7	1	8
Cottage	2	6	8
Guest House	89	207	296
Hostel/Dormitory	6	0	6
Lodge	6	41	47
Motel	3	17	20
Others	6	10	16
Tented Camp	0	2	2
Town Hotel	46	297	343
Vacation Hotel	7	46	53
[[4]]			
q4ad	No	Yes	Total
-----	----	----	-----
Apartment	7	1	8
Cottage	7	1	8
Guest House	281	15	296
Hostel/Dormitory	6	0	6
Lodge	44	3	47
Motel	16	4	20
Others	16	0	16
Tented Camp	2	0	2

Town Hotel	233	110	343
Vacation Hotel	36	17	53

[[5]]

q4ae	No	Yes	Total
-----	----	----	-----
Apartment	5	3	8
Cottage	6	2	8
Guest House	291	5	296
Hostel/Dormitory	5	1	6
Lodge	46	1	47
Motel	18	2	20
Others	16	0	16
Tented Camp	2	0	2
Town Hotel	250	93	343
Vacation Hotel	40	13	53

[[6]]

q4af	No	Yes	Total
-----	----	----	-----
Apartment	7	1	8
Cottage	1	7	8
Guest House	164	132	296
Hostel/Dormitory	4	2	6
Lodge	6	41	47
Motel	5	15	20
Others	3	13	16
Tented Camp	1	1	2
Town Hotel	18	325	343
Vacation Hotel	3	50	53

[[7]]

q4ag	No	Yes	Total
-----	----	----	-----
Apartment	7	1	8
Cottage	5	3	8
Guest House	289	7	296
Hostel/Dormitory	5	1	6
Lodge	33	14	47
Motel	18	2	20
Others	15	1	16
Tented Camp	2	0	2
Town Hotel	215	128	343
Vacation Hotel	27	26	53

[[8]]

q4ah	No	Yes	Total
-----	----	----	-----
Apartment	6	2	8
Cottage	7	1	8
Guest House	253	43	296
Hostel/Dormitory	5	1	6
Lodge	44	3	47
Motel	16	4	20

Others	12	4	16
Tented Camp	2	0	2
Town Hotel	152	191	343
Vacation Hotel	32	21	53

[[9]]

q4ai	No	Yes	Total
-----	----	----	-----
Apartment	1	7	8
Cottage	1	7	8
Guest House	123	173	296
Hostel/Dormitory	2	4	6
Lodge	5	42	47
Motel	5	15	20
Others	6	10	16
Tented Camp	0	2	2
Town Hotel	32	311	343
Vacation Hotel	1	52	53

[[10]]

q4aj	No	Yes	Total
-----	----	----	-----
Apartment	8	0	8
Cottage	6	2	8
Guest House	292	4	296
Hostel/Dormitory	5	1	6
Lodge	37	10	47
Motel	17	3	20
Others	16	0	16
Tented Camp	2	0	2
Town Hotel	235	108	343
Vacation Hotel	33	20	53

[[11]]

q4ak	No	Yes	Total
-----	----	----	-----
Apartment	8	0	8
Cottage	6	2	8
Guest House	291	5	296
Hostel/Dormitory	5	1	6
Lodge	31	16	47
Motel	20	0	20
Others	16	0	16
Tented Camp	1	1	2
Town Hotel	285	58	343
Vacation Hotel	39	14	53

[[12]]

q4al	No	Yes	Total
-----	----	----	-----
Apartment	6	2	8
Cottage	7	1	8
Guest House	292	4	296
Hostel/Dormitory	6	0	6
Lodge	22	25	47
Motel	19	1	20

Others	16	0	16
Tented Camp	1	1	2
Town Hotel	277	66	343
Vacation Hotel	37	16	53

[[13]]

q4am	No	Yes	Total
-----	----	----	-----
Apartment	7	1	8
Cottage	0	8	8
Guest House	170	126	296
Hostel/Dormitory	5	1	6
Lodge	9	38	47
Motel	6	14	20
Others	13	3	16
Tented Camp	1	1	2
Town Hotel	35	308	343
Vacation Hotel	5	48	53

[[14]]

q4an	No	Yes	Total
-----	----	----	-----
Apartment	7	1	8
Cottage	3	5	8
Guest House	290	6	296
Hostel/Dormitory	5	1	6
Lodge	34	13	47
Motel	18	2	20
Others	15	1	16
Tented Camp	1	1	2
Town Hotel	257	86	343
Vacation Hotel	36	17	53

[[15]]

q4ao	No	Yes	Total
-----	----	----	-----
Apartment	7	1	8
Cottage	1	7	8
Guest House	248	48	296
Hostel/Dormitory	6	0	6
Lodge	21	26	47
Motel	14	6	20
Others	12	4	16
Tented Camp	1	1	2
Town Hotel	151	192	343
Vacation Hotel	14	39	53

[[16]]

q4ap	No	Yes	Total
-----	----	----	-----
Apartment	6	2	8
Cottage	5	3	8
Guest House	272	24	296
Hostel/Dormitory	5	1	6
Lodge	29	18	47
Motel	13	7	20

Others	15	1	16
Tented Camp	2	0	2
Town Hotel	242	101	343
Vacation Hotel	34	19	53

Source: Ministry of Tourism, Wildlife and Antiquities

Table 1.16: Percentage of services offered by Region Jan to Dec 2020

Region	Central	Eastern	Kampala	Northern	Western	Total
Bed and Breakfast	91	80	158	65	145	539
Conference facilities	68	68	100	55	94	385
Bar	122	83	160	92	170	627
Steam bath/Sauna	42	12	51	17	29	151
Gym/Aerobics	22	11	49	14	24	120
Restaurant	103	79	172	86	147	587
Shuttle Services	31	28	57	25	42	183
Outside Catering	43	35	68	56	68	270
Parking for vehicles	122	86	167	84	164	623
Business centre	22	16	53	16	41	148
Shopping facilities	14	9	21	7	46	97
Swimming pool	22	19	32	10	33	116
Room service	95	72	161	70	150	548
Tour and Travel	17	21	44	6	45	133
Gardens	64	45	69	47	99	324
Other Services	28	19	49	21	59	176
Total	906	683	1,411	671	1,356	5,027

Source: Ministry of Tourism, Wildlife and Antiquities

Table 1.17: Number of Facilities Providing Bed and Breakfast by Sub Region

[[1]]			
q4aa	No	Yes	Total
-----	---	----	-----
Central	66	91	157
Eastern	27	80	107
Kampala	46	158	204
Northern	56	65	121
Western	64	145	209

[[2]]

q4ab	No	Yes	Total
-----	----	----	-----
Central	89	68	157
Eastern	39	68	107
Kampala	104	100	204
Northern	66	55	121
Western	115	94	209

[[3]]			
q4ac	No	Yes	Total
-----	----	----	-----
Central	35	122	157
Eastern	24	83	107
Kampala	44	160	204
Northern	30	91	121
Western	39	170	209

[[4]]			
q4ad	No	Yes	Total
-----	----	----	-----
Central	115	42	157
Eastern	95	12	107
Kampala	153	51	204
Northern	104	17	121
Western	180	29	209

[[5]]			
q4ae	No	Yes	Total
-----	----	----	-----
Central	135	22	157
Eastern	96	11	107
Kampala	155	49	204
Northern	107	14	121
Western	185	24	209

[[6]]			
q4af	No	Yes	Total
-----	----	----	-----
Central	54	103	157
Eastern	28	79	107
Kampala	32	172	204
Northern	36	85	121
Western	62	147	209

[[7]]			
q4ag	No	Yes	Total
-----	----	----	-----
Central	126	31	157
Eastern	79	28	107
Kampala	147	57	204

Northern	96	25	121
Western	167	42	209

[[8]]

q4ah	No	Yes	Total
------	----	-----	-------

Central	114	43	157
Eastern	72	35	107
Kampala	136	68	204
Northern	65	56	121
Western	141	68	209

[[9]]

q4ai	No	Yes	Total
------	----	-----	-------

Central	35	122	157
Eastern	21	86	107
Kampala	37	167	204
Northern	38	83	121
Western	45	164	209

[[10]]

q4aj	No	Yes	Total
------	----	-----	-------

Central	135	22	157
Eastern	91	16	107
Kampala	151	53	204
Northern	105	16	121
Western	168	41	209

[[11]]

q4ak	No	Yes	Total
------	----	-----	-------

Central	143	14	157
Eastern	98	9	107
Kampala	183	21	204
Northern	114	7	121
Western	163	46	209

[[12]]

q4al	No	Yes	Total
------	----	-----	-------

Central	135	22	157
Eastern	88	19	107
Kampala	172	32	204
Northern	111	10	121
Western	176	33	209

[[13]]

q4am	No	Yes	Total
------	----	-----	-------

Central	62	95	157
Eastern	35	72	107
Kampala	43	161	204
Northern	52	69	121
Western	59	150	209

[[14]]

q4an	No	Yes	Total
-----	----	----	-----

Central	140	17	157
Eastern	86	21	107
Kampala	160	44	204
Northern	115	6	121
Western	164	45	209

[[15]]

q4ao	No	Yes	Total
-----	----	----	-----

Central	93	64	157
Eastern	62	45	107
Kampala	135	69	204
Northern	74	47	121
Western	110	99	209

[[16]]

q4ap	No	Yes	Total
-----	----	----	-----

Central	129	28	157
Eastern	88	19	107
Kampala	155	49	204
Northern	100	21	121
Western	150	59	209

Source: Ministry of Tourism, Wildlife and Antiquities

Table 1.18: Number of facilities by Region

Services	Central	Eastern	Kampala	Northern	Western	Total
Bars	159	101	189	127	211	787
Vehicle parking	173	115	248	137	235	908
Conference halls/rooms	136	139	239	118	181	813
Total	468	355	676	382	627	2,508

Source: Ministry of Tourism, Wildlife and Antiquities

Table 1.19: Percentage of facilities by Region (%)

Services	Central	Eastern	Kampala	Northern	Western	Total
Bars	20	13	24	16	27	100
Vehicle parking	19	13	27	15	26	100
Conference halls/rooms	17	17	29	15	22	100

Source: Ministry of Tourism, Wildlife and Antiquities

Table 1.20: Occupancy Rate By Month Quarter Jan to Dec 2020:

Month	Beds Available	Beds Sold	Rooms Available	Rooms Sold	Bed Occupancy Rate	Room Occupancy Rate
Jan	434,222	155,854	357,426	137,527	35.9%	38.5%
Feb	480,756	141,466	398,529	123,246	29.4%	30.9%
Mar	460,544	95,823	399,440	85,219	20.8%	21.3%
Apr	383,245	7,000	324,594	6,506	1.8%	2.0%
May	461,329	6,107	402,418	5,572	1.3%	1.4%
Jun	390,427	15,564	344,677	14,058	4.0%	4.1%
Jul	388,034	83,796	353,370	73,047	21.6%	20.7%
Aug	387,608	89,169	327,198	78,218	23.0%	23.9%
Sep	410,042	93,051	349,234	81,262	22.7%	23.3%
Oct	424,970	97,482	362,542	84,717	22.9%	23.4%
Nov	404,583	102,965	336,190	89,080	25.4%	26.5%
Dec	402,348	107,364	371,319	92,070	26.7%	24.8%
Total	5,028,108	995,641	4,326,937	870,522	19.8%	20.1%

Source: Ministry of Tourism, Wildlife and Antiquities

Table 1.21: Occupancy Rate By Month Quarter Jan to Dec 2020

	Jan	Feb	Mar	Apr	May	Jun	Jul	Aug	Sep	Oct	Nov	Dec	Total
Bed Occupancy Rate	35.9%	29.4%	20.8%	1.8%	1.3%	4.0%	21.6%	23.0%	22.7%	22.9%	25.4%	26.7%	19.8%
Room Occupancy Rate	38.5%	30.9%	21.3%	2.0%	1.4%	4.1%	20.7%	23.9%	23.3%	23.4%	26.5%	24.8%	20.1%

Source: Ministry of Tourism, Wildlife and Antiquities

Table 1.22: Number of Rooms available by Accommodation Type, Month and Quarter:

	Jan	Feb	Mar	Apr	May	Jun	Jul	Aug	Sep	Oct	Nov	Dec	Total
Apartment	3,379	3,161	3,379	3,270	3,379	3,270	558	527	570	589	570	558	23,210
Cottage	2,480	2,320	2,480	2,370	2,449	2,370	1,984	1,984	1,920	1,984	1,920	1,984	26,245
Guest House	76,353	70,905	68,665	65,194	68,293	77,375	71,486	68,603	66,483	68,572	66,485	68,975	837,389
Hostel/Dormitory	7,254	6,786	7,254	7,020	7,254	7,020	1,116	1,116	1,080	1,116	1,080	1,116	49,212
Lodge	15,314	18,357	15,128	14,650	15,128	14,650	8,401	8,401	8,130	8,401	8,130	8,401	143,091
Motel	4,559	4,263	4,557	4,410	4,557	4,410	4,929	4,925	4,860	4,925	4,774	4,929	56,098
Others	1,426	1,334	1,426	1,380	1,426	1,380	2,077	2,077	2,010	2,077	2,010	2,077	20,700
Tented Camp	403	377	403	390	403	390	496	496	480	496	480	496	5,310
Town Hotel	205,493	252,921	255,383	186,970	259,291	194,872	228,997	203,883	231,450	241,056	218,550	249,457	2,728,323
Vacation Hotel	40,765	38,105	40,765	38,940	40,238	38,940	33,326	35,186	32,251	33,326	32,191	33,326	437,359
Total	357,426	398,529	399,440	324,594	402,418	344,677	353,370	327,198	349,234	362,542	336,190	371,319	4,326,937

Source: Ministry of Tourism, Wildlife and Antiquities

Table 1.23: Number of Rooms Sold out by Accommodation Type, Month and Quarter

	Jan	Feb	Mar	Apr	May	Jun	Jul	Aug	Sep	Oct	Nov	Dec	Total
Apartment	692	769	687	605	651	602	220	187	253	253	245	239	5,403
Cottage	1,421	1,322	819	-	-	-	228	175	433	359	569	1,037	6,363
Guest House	32,704	29,394	19,689	656	644	1,242	17,859	18,158	19,186	19,763	20,152	20,276	199,723
Hostel/Dormitory	3,781	3,783	3,737	45	33	33	334	339	324	498	481	496	13,884
Lodge	7,786	7,195	5,447	15	-	3,012	1,934	2,352	2,058	2,692	2,765	3,715	38,971
Motel	1,795	1,569	1,502	221	252	219	1,203	1,357	1,499	1,911	1,951	2,222	15,701
Others	276	223	299	-	-	-	434	414	471	451	469	468	3,505
Tented Camp	403	319	300	-	-	-	253	251	301	343	421	452	3,043
Town Hotel	72,339	64,869	43,304	4,388	3,819	7,721	44,521	48,768	49,075	50,260	53,180	53,791	496,035
Vacation Hotel	16,330	13,803	9,435	576	173	1,229	6,061	6,217	7,662	8,187	8,847	9,374	87,894
Total	137,527	123,246	85,219	6,506	5,572	14,058	73,047	78,218	81,262	84,717	89,080	92,070	870,522

Source: Ministry of Tourism, Wildlife and Antiquities

Table 1.24: Room Occupancy Rate by Accommodation Type, Month and Quarter

	Jan	Feb	Mar	Apr	May	Jun	Jul	Aug	Sep	Oct	Nov	Dec	Total
Apartment	20.5%	24.3%	20.3%	18.5%	19.3%	18.4%	39.4%	35.5%	44.4%	43.0%	43.0%	42.8%	23.3%
Cottage	57.3%	57.0%	33.0%	0.0%	0.0%	0.0%	11.5%	8.8%	22.6%	18.1%	29.6%	52.3%	24.2%
Guest House	42.8%	41.5%	28.7%	1.0%	0.9%	1.6%	25.0%	26.5%	28.9%	28.8%	30.3%	29.4%	23.9%
Hostel/Dormitory	52.1%	55.7%	51.5%	0.6%	0.5%	0.5%	29.9%	30.4%	30.0%	44.6%	44.5%	44.4%	28.2%
Lodge	50.8%	39.2%	36.0%	0.1%	0.0%	20.6%	23.0%	28.0%	25.3%	32.0%	34.0%	44.2%	27.2%
Motel	39.4%	36.8%	33.0%	5.0%	5.5%	5.0%	24.4%	27.6%	30.8%	38.8%	40.9%	45.1%	28.0%
Others	19.4%	16.7%	21.0%	0.0%	0.0%	0.0%	20.9%	19.9%	23.4%	21.7%	23.3%	22.5%	16.9%
Tented Camp	100.0%	84.6%	74.4%	0.0%	0.0%	0.0%	51.0%	50.6%	62.7%	69.2%	87.7%	91.1%	57.3%
Town Hotel	35.2%	25.6%	17.0%	2.3%	1.5%	4.0%	19.4%	23.9%	21.2%	20.8%	24.3%	21.6%	18.2%
Vacation Hotel	40.1%	36.2%	23.1%	1.5%	0.4%	3.2%	18.2%	17.7%	23.8%	24.6%	27.5%	28.1%	20.1%
Total	38.5%	30.9%	21.3%	2.0%	1.4%	4.1%	20.7%	23.9%	23.3%	23.4%	26.5%	24.8%	20.1%

Source: Ministry of Tourism, Wildlife and Antiquities

Table 1.25: Number of Beds Available by Accommodation Type, Month and Quarter

	Jan	Feb	Mar	Apr	May	Jun	Jul	Aug	Sep	Oct	Nov	Dec	Total
Apartment	5,518	5,162	5,518	5,340	5,518	5,340	961	930	960	992	960	961	38,160
Cottage	3,937	3,691	3,937	3,780	3,906	3,780	3,410	3,410	3,300	3,410	3,300	3,410	43,271
Guest House	100,502	92,423	74,555	71,618	73,997	71,615	78,492	78,399	75,966	78,368	75,970	78,337	950,242
Hostel/Dormitory	7,369	6,903	7,369	7,136	7,369	7,136	1,896	1,896	1,835	1,896	1,835	1,896	54,536
Lodge	21,675	23,998	20,511	19,594	20,309	19,566	14,601	14,597	14,178	14,601	14,178	14,601	212,409
Motel	4,683	4,379	4,681	4,530	4,681	4,530	6,107	6,103	6,290	6,103	5,914	6,107	64,108
Others	1905	1785	1915	1845	1905	1845	2356	2356	2280	2356	2280	2356	25,184
Tented Camp	403	377	403	390	403	390	868	868	840	868	840	868	7,518
Town Hotel	237,046	294,213	290,472	220,712	293,331	227,996	236,593	236,305	263,016	273,632	257,995	251,062	3,082,373
Vacation Hotel	51,184	47,825	51,183	48,300	49,910	48,229	42,750	42,744	41,377	42,744	41,311	42,750	550,307
Total	434,222	480,756	460,544	383,245	461,329	390,427	388,034	387,608	410,042	424,970	404,583	402,348	5,028,108

Source: Ministry of Tourism, Wildlife and Antiquities

Table 1.26: Number of Beds Sold out by Accommodation Type, Month and Quarter

	Jan	Feb	Mar	Apr	May	Jun	Jul	Aug	Sep	Oct	Nov	Dec	Total
Apartment	828	881	663	583	620	574	409	374	446	444	430	447	6,699
Cottage	1,884	2,059	1,119	0	0	0	412	215	547	550	875	1,603	9,264
Guest House	34,403	30,712	20,397	706	644	1,159	20,785	21,055	22,095	22,660	23,644	23,539	221,799
Hostel/Dormitory	5,256	5,350	4,604	60	43	43	451	430	430	523	540	513	18,243
Lodge	11,169	9,869	6,493	30	0	3,012	4,206	4,743	4,296	5,273	5,030	6,875	60,996
Motel	1,820	1,587	1,511	221	256	221	1,431	1,653	1,901	2,480	2,505	2,823	18,409
Others	337	279	329	0	0	0	436	415	474	454	476	473	3,673
Tented Camp	403	319	300	0	0	0	263	257	363	468	663	743	3,779
Town Hotel	80,707	74,119	48,518	5,008	4,371	8,965	48,151	52,744	53,234	54,875	57,979	59,072	547,743
Vacation Hotel	19,047	16,291	11,889	392	173	1,590	7,252	7,283	9,265	9,755	10,823	11,276	105,036
Total	155,854	141,466	95,823	7,000	6,107	15,564	83,796	89,169	93,051	97,482	102,965	107,364	995,641

Source: Ministry of Tourism, Wildlife and Antiquities

Table 1.27: Bed Occupancy rate by Accommodation Type, Month and Quarter

	Jan	Feb	Mar	Apr	May	Jun	Jul	Aug	Sep	Oct	Nov	Dec	Total
Apartment	15.0%	17.1%	12.0%	10.9%	11.2%	10.7%	42.6%	40.2%	46.5%	44.8%	44.8%	46.5%	17.6%
Cottage	47.9%	55.8%	28.4%	0.0%	0.0%	0.0%	12.1%	6.3%	16.6%	16.1%	26.5%	47.0%	21.4%
Guest House	34.2%	33.2%	27.4%	1.0%	0.9%	1.6%	26.5%	26.9%	29.1%	28.9%	31.1%	30.0%	23.3%
Hostel/Dormitory	71.3%	77.5%	62.5%	0.8%	0.6%	0.6%	23.8%	22.7%	23.4%	27.6%	29.4%	27.1%	33.5%
Lodge	51.5%	41.1%	31.7%	0.2%	0.0%	15.4%	28.8%	32.5%	30.3%	36.1%	35.5%	47.1%	28.7%
Motel	38.9%	36.2%	32.3%	4.9%	5.5%	4.9%	23.4%	27.1%	30.2%	40.6%	42.4%	46.2%	28.7%
Others	17.7%	15.6%	17.2%	0.0%	0.0%	0.0%	18.5%	17.6%	20.8%	19.3%	20.9%	20.1%	14.6%
Tented Camp	100.0%	84.6%	74.4%	0.0%	0.0%	0.0%	30.3%	29.6%	43.2%	53.9%	78.9%	85.6%	50.3%
Town Hotel	34.0%	25.2%	16.7%	2.3%	1.5%	3.9%	20.4%	22.3%	20.2%	20.1%	22.5%	23.5%	17.8%
Vacation Hotel	37.2%	34.1%	23.2%	0.8%	0.3%	3.3%	17.0%	17.0%	22.4%	22.8%	26.2%	26.4%	19.1%
Total	35.9%	29.4%	20.8%	1.8%	1.3%	4.0%	21.6%	23.0%	22.7%	22.9%	25.4%	26.7%	19.8%

Source: Ministry of Tourism, Wildlife and Antiquities

Table 1.28: Number of Rooms available by Sub-Region, Month and Quarter

	Jan	Feb	Mar	Apr	May	Jun	Jul	Aug	Sep	Oct	Nov	Dec	Total
Central	73,464	120,814	123,814	59,880	118,234	68,880	65,813	65,813	63,780	65,813	63,690	71,827	961,822
Eastern	51,708	47,850	43,028	41,654	43,018	52,960	47,368	48,976	45,333	60,884	67,383	47,058	597,220
Kampala	116,345	112,159	119,939	115,950	119,412	115,530	117,800	92,814	124,380	116,250	89,430	117,955	1,357,964
Northern	43,431	37,149	39,747	37,110	38,533	37,288	41,789	38,999	37,741	38,999	37,741	38,999	467,526
Western	72,478	80,557	72,912	70,000	83,221	70,019	80,600	80,596	78,000	80,596	77,946	95,480	942,405
Total	357,426	398,529	399,440	324,594	402,418	344,677	353,370	327,198	349,234	362,542	336,190	371,319	4,326,937

Source: Ministry of Tourism, Wildlife and Antiquities

Table 1.29: Number of Rooms Sold Out by Sub-Region, Month and Quarter

	Jan	Feb	Mar	Apr	May	Jun	Jul	Aug	Sep	Oct	Nov	Dec	Total
Central	27,597	24,848	16,629	640	457	1,848	13270	15416	16988	17451	18268	19824	173,236
Eastern	17,490	14,889	7,470	1,654	1,610	2,827	13,213	13,565	12,868	11,778	12,709	12,810	122,883
Kampala	39,862	36,467	25,140	3,189	2,812	3,523	18,827	20,996	20,808	22,922	25,028	27,279	246,853
Northern	11,487	9,506	5,772	63	106	754	15,114	15,027	15,512	15,763	15,084	11,688	115,876
Western	41,091	37,536	30,208	960	587	5,106	12,623	13,214	15,086	16,803	17,991	20,469	211,674
Total	137,527	123,246	85,219	6,506	5,572	14,058	73,047	78,218	81,262	84,717	89,080	92,070	870,522

Source: Ministry of Tourism, Wildlife and Antiquities

Table 1.30: Room Occupancy rate by Sub-Region, Month and Quarter

	Jan	Feb	Mar	Apr	May	Jun	Jul	Aug	Sep	Oct	Nov	Dec	Total
Central	37.6%	20.6%	13.4%	1.1%	0.4%	2.7%	20.2%	23.4%	26.6%	26.5%	28.7%	27.6%	18.0%
Eastern	33.8%	31.1%	17.4%	4.0%	3.7%	5.3%	27.9%	27.7%	28.4%	19.3%	18.9%	27.2%	20.6%
Kampala	34.3%	32.5%	21.0%	2.8%	2.4%	3.0%	16.0%	22.6%	16.7%	19.7%	28.0%	23.1%	18.2%
Northern	26.4%	25.6%	14.5%	0.2%	0.3%	2.0%	36.2%	38.5%	41.1%	40.4%	40.0%	30.0%	24.8%
Western	56.7%	46.6%	41.4%	1.4%	0.7%	7.3%	15.7%	16.4%	19.3%	20.8%	23.1%	21.4%	22.5%
Total	38.5%	30.9%	21.3%	2.0%	1.4%	4.1%	20.7%	23.9%	23.3%	23.4%	26.5%	24.8%	20.1%

Source: Ministry of Tourism, Wildlife and Antiquities

Table 1.31: Number of Bed Nights available by Sub-Region, Month and Quarter

	Jan	Feb	Mar	Apr	May	Jun	Jul	Aug	Sep	Oct	Nov	Dec	Total
Central	79,103	126,114	129,465	65,252	123,785	74,294	73,780	73,774	71,786	73,768	71,400	73,780	1,036,301
Eastern	81,654	74,789	55,645	53,278	55,003	53,272	59,830	59,574	57,396	73,346	79,446	59,520	762,753
Kampala	140,657	138,315	147,939	142,926	147,411	142,509	111,124	110,969	142,130	134,560	115,060	110,868	1,584,468
Northern	44,616	38,270	40,012	38,173	38,695	37,481	47,442	47,442	45,916	47,442	45,915	47,442	518,846
Western	88,192	103,268	87,483	83,616	96,435	82,871	95,858	95,849	92,814	95,854	92,762	110,738	1,125,740
Total	434,222	480,756	460,544	383,245	461,329	390,427	388,034	387,608	410,042	424,970	404,583	402,348	5,028,108

Source: Ministry of Tourism, Wildlife and Antiquities

Table 1.32: Number of Bed Nights Sold Out by Sub-Region, Month and Quarter

	Jan	Feb	Mar	Apr	May	Jun	Jul	Aug	Sep	Oct	Nov	Dec	Total
Central	29,936	26,673	17,955	640	457	2,489	15,103	17,327	19,077	19,849	20,522	22,245	192,273
Eastern	20,854	17,435	8,775	1,863	1,751	2,943	15,116	15,444	15,033	13,986	15,501	15,771	144,472
Kampala	44,715	41,689	28,461	3,602	3,322	4,077	21,300	23,847	23,845	26,216	28,757	31,183	281,014
Northern	10,315	9,983	6,035	63	106	741	17,776	17,537	17,972	18,319	17,582	14,087	130,516
Western	50,034	45,686	34,597	832	471	5,314	14,501	15,014	17,124	19,112	20,603	24,078	247,366
Total	155,854	141,466	95,823	7,000	6,107	15,564	83,796	89,169	93,051	97,482	102,965	107,364	995,641

Source: Ministry of Tourism, Wildlife and Antiquities

Table 1.33: Bed Occupancy Rate by Sub-Region, Month and Quarter

	Jan	Feb	Mar	Apr	May	Jun	Jul	Aug	Sep	Oct	Nov	Dec	Total
Central	37.8%	21.1%	13.9%	1.0%	0.4%	3.4%	20.5%	23.5%	26.6%	26.9%	28.7%	30.2%	18.6%
Eastern	25.5%	23.3%	15.8%	3.5%	3.2%	5.5%	25.3%	25.9%	26.2%	19.1%	19.5%	26.5%	18.9%
Kampala	31.8%	30.1%	19.2%	2.5%	2.3%	2.9%	19.2%	21.5%	16.8%	19.5%	25.0%	28.1%	17.7%
Northern	23.1%	26.1%	15.1%	0.2%	0.3%	2.0%	37.5%	37.0%	39.1%	38.6%	38.3%	29.7%	25.2%
Western	56.7%	44.2%	39.5%	1.0%	0.5%	6.4%	15.1%	15.7%	18.4%	19.9%	22.2%	21.7%	22.0%
Total	35.9%	29.4%	20.8%	1.8%	1.3%	4.0%	21.6%	23.0%	22.7%	22.9%	25.4%	26.7%	19.8%

Source: Ministry of Tourism, Wildlife and Antiquities

Table 1.34: Number of Room Available by Type of Room and Month

	Jan	Feb	Mar	Apr	May	Jun	Jul	Aug	Sep	Oct	Nov	Dec	Total
Apartment Room	4,557	4,263	4,557	4,410	4,557	4,410	27,931	2,821	2,730	2,821	2,730	27,931	93,718
Camp Site Room	1,581	1,450	1,488	1,440	1,488	1,440	1,085	1,085	1,050	1,085	1,050	1,085	15,327
Cottage Room	9,455	8,845	9,331	9,030	9,331	9,030	6,479	6,479	6,270	6,479	6,270	6,479	93,478
Deluxe Rooms	868	812	868	840	868	840	372	372	360	372	360	372	7,304
Double Room	126,294	171,646	173,941	107,560	177,833	116,136	114,235	114,324	145,500	151,555	123,484	129,239	1,651,747
Hostel/Dormitory	4,278	4,002	4,278	4,140	4,278	4,140	4,061	3,131	1,230	1,271	1,230	1,271	37,310
Other (Specify)	4,867	4,524	5,766	4,680	5,642	5,430	3,659	3,659	3,241	3,535	3,361	3,659	52,023
Presidential Suite	310	290	310	300	310	300	682	682	660	682	660	682	5,868
Single Room	147,430	137,634	146,201	141,060	146,351	152,961	144,305	144,274	139,140	144,181	148,320	150,319	1,742,176
Suite Room	9,922	9,280	9,920	9,570	9,610	9,300	9,269	9,269	8,970	9,269	8,970	9,269	112,618
Twin Room	47,864	55,783	42,780	41,564	42,150	40,690	41,199	41,009	39,993	41,199	39,665	40,920	514,816
Other (Executive)	NA	NA	NA	NA	NA	NA	93	93	90	93	90	93	552
Total	357,426	398,529	399,440	324,594	402,418	344,677	353,370	327,198	349,234	362,542	336,190	371,319	4,326,937

Source: Ministry of Tourism, Wildlife and Antiquities

Table 1.35: Number of Rooms Sold out by Type of Room and Month

	Jan	Feb	Mar	Apr	May	Jun	Jul	Aug	Sep	Oct	Nov	Dec	Total
Apartment Room	1,476	1,320	1,252	570	620	572	550	590	658	707	739	828	9,882
Camp Site Room	1,053	751	546	0	0	100	216	195	154	196	110	159	3,480
Cottage Room	3,777	3,145	2,026	103	106	314	1,488	1,261	1,657	1,710	2,179	2,464	20,230
Deluxe Rooms	78	66	36	0	0	0	0	0	0	0	0	0	180
Double Room	45,370	41,370	28,425	3,002	2,457	4,546	27,758	29,991	31,982	32,525	33,770	34,674	315,870
Hostel/Dormitory	574	477	420	0	0	0	399	408	381	503	480	530	4,172
Other (Specify)	651	586	389	21	2	7	111	567	122	413	500	293	3,662
Presidential Suite	66	17	14	3	1	24	133	150	156	124	111	129	928
Single Room	67,245	60,155	42,666	1,914	1,507	6,339	34,231	36,204	37,126	38,383	40,708	41,531	408,009
Suite Room	2,819	2,701	1,348	125	161	308	692	851	862	973	1,070	1,170	13,080
Twin Room	14,418	12,658	8,097	768	718	1,848	7,376	7,939	8,074	9,152	9,353	10,199	90,600
Other (Executive)	NA	NA	NA	NA	NA	NA	93	62	90	31	60	93	429
Total	137,527	123,246	85,219	6,506	5,572	14,058	73,047	78,218	81,262	84,717	89,080	92,070	870,522

Source: Ministry of Tourism, Wildlife and Antiquities

Table 1.36: Room Occupancy Rate by Type of Room and Month

	Jan	Feb	Mar	Apr	May	Jun	Jul	Aug	Sep	Oct	Nov	Dec	Total
Apartment Room	32.4%	31.0%	27.5%	12.9%	13.6%	13.0%	2.0%	20.9%	24.1%	25.1%	27.1%	3.0%	10.5%
Camp Site Room	66.6%	51.8%	36.7%	0.0%	0.0%	6.9%	19.9%	18.0%	14.7%	18.1%	10.5%	14.7%	22.7%
Cottage Room	39.9%	35.6%	21.7%	1.1%	1.1%	3.5%	23.0%	19.5%	26.4%	26.4%	34.8%	38.0%	21.6%
Deluxe Rooms	9.0%	8.1%	4.1%	0.0%	0.0%	0.0%	0.0%	0.0%	0.0%	0.0%	0.0%	0.0%	2.5%
Double Room	35.9%	24.1%	16.3%	2.8%	1.4%	3.9%	24.3%	26.2%	22.0%	21.5%	27.3%	26.8%	19.1%
Hostel/Dormitory	13.4%	11.9%	9.8%	0.0%	0.0%	0.0%	9.8%	13.0%	31.0%	39.6%	39.0%	41.7%	11.2%
Other (Specify)	13.4%	13.0%	6.7%	0.4%	0.0%	0.1%	3.0%	15.5%	3.8%	11.7%	14.9%	8.0%	7.0%
Presidential Suite	21.3%	5.9%	4.5%	1.0%	0.3%	8.0%	19.5%	22.0%	23.6%	18.2%	16.8%	18.9%	15.8%
Single Room	45.6%	43.7%	29.2%	1.4%	1.0%	4.1%	23.7%	25.1%	26.7%	26.6%	27.4%	27.6%	23.4%
Suite Room	28.4%	29.1%	13.6%	1.3%	1.7%	3.3%	7.5%	9.2%	9.6%	10.5%	11.9%	12.6%	11.6%
Twin Room	30.1%	22.7%	18.9%	1.8%	1.7%	4.5%	17.9%	19.4%	20.2%	22.2%	23.6%	24.9%	17.6%
Other (Executive)							100.0%	66.7%	100.0%	33.3%	66.7%	100.0%	77.7%
Total	38.5%	30.9%	21.3%	2.0%	1.4%	4.1%	20.7%	23.9%	23.3%	23.4%	26.5%	24.8%	20.1%

Source: Ministry of Tourism, Wildlife and Antiquities

Table 1.37: Number of Beds Available by Type of Room and Month

	Jan	Feb	Mar	Apr	May	Jun	Jul	Aug	Sep	Oct	Nov	Dec	Total
Apartment Room	7,843	7,337	7,843	7,410	7,657	7,410	5,487	5,487	5,310	5,487	5,310	5,487	78,068
Camp Site Room	2,325	2,030	2,015	1,350	1,395	1,366	2,294	2,294	2,268	2,294	2,268	2,294	24,193
Cottage Room	16,097	15,080	15,173	14,454	14,971	14,638	12,431	12,334	12,030	12,431	12,030	12,431	164,100
Deluxe Rooms	868	812	868	840	868	840	12	12	12	12	12	12	5,168
Double Room	126,294	171,646	173,941	107,560	177,833	116,136	114,235	114,324	145,500	151,555	123,484	129,239	1,651,747
Hostel/Dormitory	7,916	7,412	7,926	7,661	7,916	7,661	8,513	8,513	8,239	8,513	8,239	8,513	97,022
Other (Specify)	7,441	6,937	7,410	7,081	7,193	6,961	5,270	5,270	4,800	5,146	4,920	5,270	73,699
Presidential Suite	405	379	405	392	405	392	961	961	930	961	930	961	8,082
Single Room	147,430	137,634	146,201	141,060	146,351	141,651	144,305	144,274	139,140	144,181	148,320	144,305	1,724,852
Suite Room	12,141	11,368	12,148	11,289	11,386	11,059	11,570	11,563	11,287	11,434	19,200	11,438	145,883
Twin Room	105,462	120,121	86,614	84,148	85,354	82,313	82,863	82,483	80,436	82,863	79,780	82,305	1,054,742
Other (Executive)	NA	NA	NA	NA	NA	NA	93	93	90	93	90	93	552
Total	434,222	480,756	460,544	383,245	461,329	390,427	388,034	387,608	410,042	424,970	404,583	402,348	5,028,108

Source: Ministry of Tourism, Wildlife and Antiquities

Table 1.38: Number of Beds Sold out by Type of Room and Month

	Jan	Feb	Mar	Apr	May	Jun	Jul	Aug	Sep	Oct	Nov	Dec	Total
Apartment Room	1,964	1,919	1,542	543	589	544	1,217	1,321	1,524	1,643	1,743	1,945	16,494
Camp Site Room	1,635	1,085	664	0	0	100	760	744	592	760	376	612	7,328
Cottage Room	6,284	5,467	3,282	133	137	345	3,157	2,708	3,397	3,547	4,352	5,005	37,814
Deluxe Rooms	78	66	36	0	0	0	0	0	0	0	0	0	180
Double Room	44,472	40,587	28,048	2,849	2,457	4,532	27,603	29,803	31,808	32,399	33,998	34,487	313,043
Hostel/Dormitory	2,660	2,822	1,868	0	0	0	2,425	2,357	2,265	2,381	2,326	2,385	21,489
Other (Specify)	831	716	485	21	2	7	133	579	140	532	695	504	4,645
Presidential Suite	66	17	14	3	1	24	133	150	184	160	131	129	1,012
Single Room	65,394	60,122	42,669	1,914	1,507	6,251	33,469	35,314	36,320	37,565	40,064	40,802	401,391
Suite Room	3,538	3,304	1,932	245	285	568	855	1,050	1,153	1,135	1,242	1,506	16,813
Twin Room	28,932	25,361	15,283	1,292	1,129	3,193	13,951	15,081	15,578	17,329	17,978	19,896	175,003
Other (Executive)	NA	NA	NA	NA	NA	NA	93	62	90	31	60	93	429
Total	155,854	141,466	95,823	7,000	6,107	15,564	83,796	89,169	93,051	97,482	102,965	107,364	995,641

Source: Ministry of Tourism, Wildlife and Antiquities

Table 1.39: Bed Occupancy Rate by Type of Room and Month

	Jan	Feb	Mar	Apr	May	Jun	Jul	Aug	Sep	Oct	Nov	Dec	Total
Apartment Room	25.0%	26.2%	19.7%	7.3%	7.7%	7.3%	22.2%	24.1%	28.7%	29.9%	32.8%	35.4%	21.1%
Camp Site Room	70.3%	53.4%	33.0%	0.0%	0.0%	7.3%	33.1%	32.4%	26.1%	33.1%	16.6%	26.7%	30.3%
Cottage Room	39.0%	36.3%	21.6%	0.9%	0.9%	2.4%	25.4%	22.0%	28.2%	28.5%	36.2%	40.3%	23.0%
Deluxe Rooms	9.0%	8.1%	4.1%	0.0%	0.0%	0.0%	0.0%	0.0%	0.0%	0.0%	0.0%	0.0%	3.5%
Double Room	35.2%	23.6%	16.1%	2.6%	1.4%	3.9%	24.2%	26.1%	21.9%	21.4%	27.5%	26.7%	19.0%
Hostel/Dormitory	33.6%	38.1%	23.6%	0.0%	0.0%	0.0%	28.5%	27.7%	27.5%	28.0%	28.2%	28.0%	22.1%
Other (Specify)	11.2%	10.3%	6.5%	0.3%	0.0%	0.1%	2.5%	11.0%	2.9%	10.3%	14.1%	9.6%	6.3%
Presidential Suite	16.3%	4.5%	3.5%	0.8%	0.2%	6.1%	13.8%	15.6%	19.8%	16.6%	14.1%	13.4%	12.5%
Single Room	44.4%	43.7%	29.2%	1.4%	1.0%	4.4%	23.2%	24.5%	26.1%	26.1%	27.0%	28.3%	23.3%
Suite Room	29.1%	29.1%	15.9%	2.2%	2.5%	5.1%	7.4%	9.1%	10.2%	9.9%	6.5%	13.2%	11.5%
Twin Room	27.4%	21.1%	17.6%	1.5%	1.3%	3.9%	16.8%	18.3%	19.4%	20.9%	22.5%	24.2%	16.6%
Other (Executive)							100.0%	66.7%	100.0%	33.3%	66.7%	100.0%	77.7%
Total	35.9%	29.4%	20.8%	1.8%	1.3%	4.0%	21.6%	23.0%	22.7%	22.9%	25.4%	26.7%	19.8%

Source: Ministry of Tourism, Wildlife and Antiquities

Table 1.40: Average Employment status By Region:

Region	Female Foods and Beverages	Female Front Office	Female House keeping	Female Management	Female Trainees	Male Foods and Beverages	Male Front Office	Male House keeping	Male Management	Male Trainees
Central	1	0.6	1	0.7	0.2	0.6	0.2	0.5	0.8	0.1
Eastern	1.2	0.6	1.2	0.7	0.3	0.8	0.4	0.6	0.9	0.2
Kampala	1.9	0.8	1.8	0.7	0.4	1.4	0.4	0.8	1	0.2
Northern	1.1	0.6	1.1	0.5	0.3	0.6	0.3	0.4	0.9	0.1
Western	1.2	0.5	1.2	0.7	0.3	1.1	0.3	0.7	0.9	0.2

Source: Ministry of Tourism, Wildlife and Antiquities

Table 1.41: Percentage Distribution of Employment status by Region (%)

Region	Female Foods and Beverages	Female Front Office	Female House keeping	Female Management	Female Trainees	Male Foods and Beverages	Male Front Office	Male House keeping	Male Management	Male Trainees	Total
Central	18	10	17	11	4	11	4	9	14	2	100
Eastern	18	9	18	10	4	12	6	9	13	3	100
Kampala	20	9	19	7	4	15	4	8	11	3	100
Northern	19	11	18	9	4	10	5	6	15	1	100
Western	17	7	16	9	4	15	4	10	13	3	100

Source: Ministry of Tourism, Wildlife and Antiquities

Table 1.4.2: Average Employment status By Type of Accommodation

Region	Female Foods and Beverages	Female Front Office	Female House keeping	Female Management	Female Trainees	Male Foods and Beverages	Male Front Office	Male House keeping	Male Management	Male Trainees
Apartment	0.4	0.4	1.4	0.4	0.0	0.2	0.1	0.9	0.3	0.0
Cottage	1.1	0.4	1.0	0.9	0.3	1.1	0.1	0.6	0.8	0.4
Guest House	0.8	0.5	0.7	0.4	0.0	0.3	0.2	0.3	0.5	0.0
Hostel/Dormitory	0.4	0.6	1.4	0.4	0.0	0.2	0.2	1.6	1.0	0.0
Lodge	1.0	0.4	1.2	0.6	0.3	1.1	0.4	1.1	1.1	0.2
Motel	0.8	0.6	0.8	0.4	0.1	0.4	0.3	0.2	0.7	0.0
Others	1.5	0.8	0.3	0.5	0.2	0.8	0.4	0.2	0.5	0.0
Tented Camp	1.2	0.2	0.8	1.0	0.0	0.2	0.0	0.8	2.5	0.0
Town Hotel	1.8	0.8	1.7	0.9	0.5	1.4	0.4	0.8	1.2	0.3
Vacation Hotel	1.6	0.9	2.1	0.7	0.8	2.0	0.5	1.2	1.2	0.5

Source: Ministry of Tourism, Wildlife and Antiquities

Table 1. 43: Total Average Employment status By Region

Region	Foods and Beverages	Front Office	House keeping	Management	Trainees	Total
Central	528	252	483	460	108	1,831
Eastern	430	211	387	339	102	1,469
Kampala	1,345	473	1,032	702	263	3,815
Northern	419	234	350	341	82	1,426
Western	936	349	800	664	235	2,984
Total	3,658	1,519	3,052	2,506	790	11,525

Source: Ministry of Tourism, Wildlife and Antiquities

Table 1. 44: Total Percentage Employment status by Region (%)

Region	Foods and Beverages	Front Office	House keeping	Management	Trainees	Total
Central	29	14	26	25	6	100
Eastern	29	14	26	23	7	100
Kampala	35	12	27	18	7	100
Northern	29	16	25	24	6	100
Western	31	12	27	22	8	100

Source: Ministry of Tourism, Wildlife and Antiquities

Table 1. 45: Total Average Employment status By Type of Accommodation

Region	Foods and Beverages	Front Office	House keeping	Management	Trainees
Apartment	0.3	0.2	1.2	0.4	0.0
Cottage	1.1	0.3	0.8	0.9	0.4
Guest House	0.6	0.3	0.5	0.5	0.0
Hostel/Dormitory	0.3	0.4	1.5	0.7	0.0
Lodge	1.1	0.4	1.2	0.8	0.3
Motel	0.6	0.5	0.5	0.5	0.0
Others	1.2	0.6	0.2	0.5	0.1
Tented Camp	0.8	0.1	0.8	1.8	0.0
Town Hotel	1.6	0.6	1.3	1.1	0.4
Vacation Hotel	1.8	0.7	1.6	0.9	0.6

Source: Ministry of Tourism, Wildlife and Antiquities

Table 1. 46: Employment status

Region	Female	Male	Total	Percent (%)
Foods and Beverages	2,112	1,546	3,658	32%
Front Office	1,015	504	1,519	13%
House keeping	2,043	1,009	3,052	26%
Management	1,039	1,467	2,506	22%
Trainees	493	297	790	7%
Total	6,702	4,823	11,525	100%

Source: Ministry of Tourism, Wildlife and Antiquities

Table 1.47: Total Employment status by Region (Number)

Region	Female	Male	Total	Percent (%)
Central	1,107	724	1,831	16%
Eastern	862	607	1,469	13%
Kampala	2,244	1,571	3,815	33%
Northern	877	549	1,426	12%
Western	1,612	1,372	2,984	26%
Total	6,702	4,823	11,525	100%

Source: Ministry of Tourism, Wildlife and Antiquities

Table 1.15.8: Average Percentage Employment status by Region (%)

Region	Female	Male
Central	0.7	0.5
Eastern	0.8	0.6
Kampala	1.1	0.8
Northern	0.7	0.4
Western	0.8	0.7

Source: Ministry of Tourism, Wildlife and Antiquities

Table 1.48: Average Employment status by type of accommodation:

	Female	Male	Overall
Apartment	0.5	0.3	0.4
Cottage	0.8	0.6	0.7
Guest House	0.5	0.3	0.4
Hostel/Dormitory	0.6	0.6	0.6
Lodge	0.7	0.8	0.7
Motel	0.5	0.3	0.4
Others	0.7	0.4	0.5
Tented Camp	0.6	0.7	0.7
Town Hotel	1.1	0.8	1.0
Vacation Hotel	1.2	1.1	1.1

Source: Ministry of Tourism, Wildlife and Antiquities

Table 1.49: Employees by Residence Status and Type of Accommodation (number)

	Female National	Female Non National	Male National	Male Non National	Total
Apartment	43	0	23	1	67
Cottage	60	0	48	1	109
Guest House	1,417	26	748	59	2,250
Hostel/Dormitory	34	0	35	0	69
Lodge	314	22	352	15	703
Motel	108	1	66	0	175
Others	108	0	62	1	171
Tented Camp	13	0	13	1	27

	Female National	Female Non National	Male National	Male Non National	Total
Town Hotel	3,887	37	2,722	103	6,749
Vacation Hotel	627	5	558	15	1,205
Total	6,611	91	4,627	196	11,525

Source: Ministry of Tourism, Wildlife and Antiquities

Table 1.50: Average Employees by Residence Status and Type of Accommodation (number)

	Female National	Female Non- National	Male National	Male Non- National	National	Non National
Apartment	1.1	0.0	0.6	0.0	0.8	0.0
Cottage	1.5	0.0	1.2	0.0	1.4	0.0
Guest House	1.0	0.0	0.5	0.0	0.7	0.0
Hostel/Dormitory	1.1	0.0	1.2	0.0	1.1	0.0
Lodge	1.3	0.1	1.5	0.1	1.4	0.1
Motel	1.1	0.0	0.7	0.0	0.9	0.0
Others	1.4	0.0	0.8	0.0	1.1	0.0
Tented Camp	1.3	0.0	1.3	0.1	1.3	0.0
Town Hotel	2.3	0.0	1.6	0.1	1.9	0.0
Vacation Hotel	2.4	0.0	2.1	0.1	2.2	0.0
Total	1.1	0.0	0.6	0.0	0.8	0.0

Source: Ministry of Tourism, Wildlife and Antiquities

Table 1.51: Number of Bookings made by residence status and region, Jan to Dec 2020

Region	Meeting	Conferences	Exhibitions	Total	Cancelled	Persons
Central	2,417	403	49	2,869	99	34,624
Eastern	1,087	628	58	1,773	90	24,955
Kampala	1,011	1,368	304	2,683	350	72,177
Northern	792	326	60	1,178	117	54,341
Western	693	617	82	1,392	113	48,089
Total	6,000	3,342	553	9,895	769	234,186

Source: Ministry of Tourism, Wildlife and Antiquities

Table 1.52: Percentage distribution of MICE Bookings by residence status and region

Region	Meeting	Conferences	Exhibitions	Total
Central	84	14	2	100
Eastern	61	35	3	100
Kampala	38	51	11	100
Northern	67	28	5	100
Western	50	44	6	100
Total	61	34	6	100

Source: Ministry of Tourism, Wildlife and Antiquities

Table 1.53: Number of Bookings in facilities by residence status and Accommodation Type

	Meeting	Conferences	Exhibitions	Total	Cancelled	Persons
Apartment	185	87	33	305	25	9,421
Cottage	2	1	3	6	1	65
Guest House	19	24	0	43	10	900
Hostel/Dormitory	54	18	5	77	2	3,075
Lodge	9	2	1	12	4	425
Motel	0	0	0	0	0	0
Others	5,219	2,825	356	8,400	618	194,328
Tented Camp	499	291	155	945	109	25,052
Town Hotel	6,000	3,342	553	9,895	769	234,186
Vacation Hotel	185	87	33	305	25	9,421
Total	2	1	3	6	1	65

Source: Ministry of Tourism, Wildlife and Antiquities

Table 1.54: Percentage distribution of MICE Bookings by residence status and Accommodation Type.

	Meeting	Conferences	Exhibitions	Total
Apartment	0	100	0	100
Cottage	87	13	0	100
Guest House	61	29	11	100
Hostel/Dormitory	33	17	50	100
Lodge	44	56	0	100
Motel	70	23	6	100
Others	75	17	8	100
Tented Camp	0	0	0	0
Town Hotel	62	34	4	100
Vacation Hotel	53	31	16	100
Total	61	34	6	100

Source: Ministry of Tourism, Wildlife and Antiquities

Table 1.55: Number of MICE Bookings by Month and Accommodation Type.

	Meeting	Conferences	Exhibitions	Total	Cancelled	Persons
Jan	584	804	141	1,529	94	57,722
Feb	493	982	95	1,570	71	36,488
Mar	284	538	33	855	196	24,023
Apr	51	113	7	171	112	6,209
May	16	47	4	67	50	4,217
Jun	50	56	20	126	14	7,161
Jul	484	177	29	690	52	13,743
Aug	411	120	31	562	37	12,314
Sep	368	145	22	535	28	15,537
Oct	477	129	37	643	31	10,549
Nov	2,255	120	45	2,420	43	22,699
Dec	527	111	89	727	41	23,524
Total	6,000	3,342	553	9,895	769	234,186

Source: Ministry of Tourism, Wildlife and Antiquities

Table 1.56: Maximum Sitting Capacity for each Conference hall by Region

Region	Less than 30	31-60	61-90	91+	Total
Central	6	3	1	31	41
Eastern	5	10	4	27	46
Kampala	4	7	4	46	61
Northern	4	5	3	28	40
Western	2	10	4	48	64
Total	21	35	16	180	252

Source: Ministry of Tourism, Wildlife and Antiquities

Table 1.57: Percentage Distribution of Sitting Capacity for each Conference hall by Region

Region	Less than 30	31-60	61-90	91+	Total
Central	15	7	2	76	100
Eastern	11	22	9	59	100
Kampala	7	11	7	75	100
Northern	10	12	8	70	100
Western	3	16	6	75	100
Total	8	14	6	71	100

Source: Ministry of Tourism, Wildlife and Antiquities

Table 1.58: Maximum Sitting Capacity for each Conference hall by Accommodation Type

Region	Less than 30	31-60	61-90	91+	Total
Guest House	4	12	5	25	46
Hostel/Dormitory	1				1
Lodge	3	2		3	8
Motel	1	2		3	6
Others	1			2	3
Town Hotel	11	21	14	139	185
Vacation Hotel	1	8	3	23	35
Cottage		1		3	4
Apartment				1	1
Guest House	22	46	22	199	289
Total	4	12	5	25	46

Source: Ministry of Tourism, Wildlife and Antiquities

Table 1.59: Percentage Distribution of Sitting Capacity for each Conference hall by Region

Region	Less than 30	31-60	61-90	91+	Total
Guest House	9	26	11	54	100
Hostel/Dormitory	100	0	0	0	100
Lodge	38	25	0	38	100
Motel	17	33	0	50	100
Others	33	0	0	67	100
Town Hotel	6	11	8	75	100
Vacation Hotel	3	23	9	66	100
Cottage	0	25	0	75	100
Apartment	0	0	0	100	100
Total	8	16	8	69	100

Source: Ministry of Tourism, Wildlife and Antiquities

Table 1.60: Average Daily Room rate:

Region	Max	Min	Average
Apartment	462	334	398
Cottage	63	34	48
Guest House	13	11	12
Hostel/Dormitory	93	87	90
Lodge	300	159	229
Motel	23	18	20
Others	12	13	13
Tented Camp	93	93	93
Town Hotel	62	47	55
Vacation Hotel	62	53	57
Total	67	47	57

Source: Ministry of Tourism, Wildlife and Antiquities

Table 1.61: Average Daily room rate by Region

Region	Max	Min	Average
Central	29	23	26
Eastern	52	46	49
Kampala	76	54	65
Northern	51	36	43
Western	96	62	79
Total	67	47	57

Source: Ministry of Tourism, Wildlife and Antiquities

Table 162: Revenues by Accommodation Type and Month

Region	Jan	Feb	Mar	Apr	May	Jun	Jul	Aug	Sep	Oct	Nov	Dec	Total
Apartment	275,416	306,062	273,426	240,790	259,098	239,596	87,560	74,426	100,694	100,694	97,510	95,122	2,150,394
Cottage	68,208	63,456	39,312	-	-	-	10,944	8,400	20,784	17,232	27,312	49,776	305,424
Guest House	392,448	352,728	236,268	7,872	7,728	14,904	214,308	217,896	230,232	237,156	241,824	243,312	2,396,676
Hostel/	340,290	340,470	336,330	4,050	2,970	2,970	30,060	30,510	29,160	44,820	43,290	44,640	1,249,560
Dormitory													
Lodge	1,782,994	1,647,655	1,247,363	3,435	-	689,748	442,886	538,608	471,282	616,468	633,185	850,735	8,924,359
Motel	35,900	31,380	30,040	4,420	5,040	4,380	24,060	27,140	29,980	38,220	39,020	44,440	314,020
Others	3,588	2,899	3,887	-	-	-	5,642	5,382	6,123	5,863	6,097	6,084	45,565
Tented Camp	37,479	29,667	27,900	-	-	-	23,529	23,343	27,993	31,899	39,153	42,036	282,999
Town Hotel	3,978,645	3,567,795	2,381,720	241,340	210,045	424,655	2,448,655	2,682,240	2,699,125	2,764,300	2,924,900	2,958,505	27,281,925
Vacation Hotel	930,810	786,771	537,795	32,832	9,861	70,053	345,477	354,369	436,734	466,659	504,279	534,318	5,009,958
Total	7,845,778	7,128,883	5,114,041	534,739	494,742	1,446,306	3,633,121	3,962,314	4,052,107	4,323,311	4,556,570	4,868,968	47,960,880

Source: Ministry of Tourism, Wildlife and Antiquities

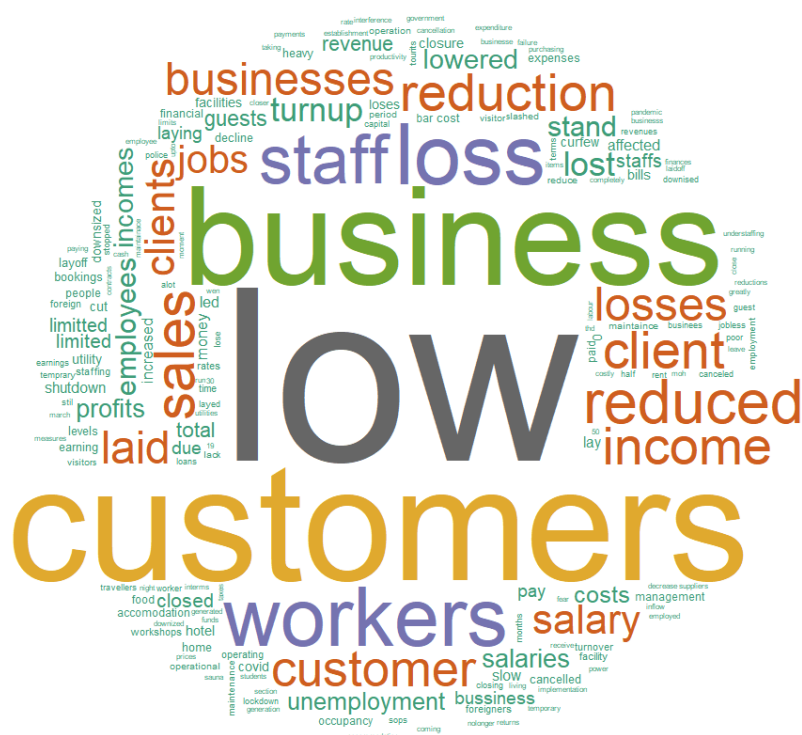
Table 1.63: Revenues by Sub region and Month

Region	Jan	Feb	Mar	Apr	May	Jun	Jul	Aug	Sep	Oct	Nov	Dec	Total
Central	717,522	646,048	432,354	16,640	11,882	48,048	345,020	400,816	441,688	453,726	474,968	515,424	4,504,136
Eastern	857,010	729,561	366,030	81,046	78,890	138,523	647,437	664,685	630,532	577,122	622,741	627,690	6,021,267
Kampala	2,591,030	2,370,355	1,634,100	207,285	182,780	228,995	1,223,755	1,364,740	1,352,520	1,489,930	1,626,820	1,773,135	16,045,445
Northern	493,941	408,758	248,196	2,709	4,558	32,422	649,902	646,161	667,016	677,809	648,612	502,584	4,982,668
Western	3,246,189	2,965,344	2,386,432	75,840	46,373	403,374	997,217	1,043,906	1,191,794	1,327,437	1,421,289	1,617,051	16,722,246
Total	7,905,692	7,120,066	5,067,112	383,520	324,483	851,362	3,863,331	4,120,308	4,283,550	4,526,024	4,794,430	5,035,884	48,275,762

Source: Ministry of Tourism, Wildlife and Antiquities

	Jan	Feb	Mar	Apr	May	Jun	Jul	Aug	Sep	Oct	Nov	Dec
Foreign	25	23	18	7	6	7	8	7	8	8	8	8
Local	75	76	74	37	37	42	83	85	86	87	87	88
Total	100	99	92	44	43	49	91	92	94	95	95	96

Table 1.65: Effects of the Corona Virus on Accommodation Establishments

[illegible]



MINISTRY OF TOURISM, WILDLIFE AND ANTIQUITIES
& UGANDA BUREAU OF STATISTICS
ACCOMMODATION STATISTICS SURVEY- FY 2019/20

Strictly Confidential

The information provided on this form is confidential and will be used for statistical purposes only

Introduction

This Accommodation survey is being conducted by the Ministry of Tourism, Wildlife and Antiquities (MTWA) in collaboration with the Uganda Bureau of Statistics (UBOS) under Statistics Act 1998, your cooperation is highly appreciated.

Survey Objective

Is to collect basic information on hotels and other accommodation facilities in the country by establishment type, employment status, services offered, bedroom and bed occupancy levels. We therefore encourage all hospitality operators to participate genuinely. The information gathered will enable government to build capacity of the hospitality industry and generate bedroom and bed capacity statistics on a quarterly basis.

1.Name of Accommodation Establishment:	
2.Period of Reference (month):	January 2020 to Dec 2020
3. Period Code 2019/20	
4. Are you a member of UHOA (Uganda Hotel Owners Association)?	Yes=1 No=2

For any inquires with the questionnaire, please contact

Assistant Commissioner Policy Research and Planning Division Ministry of Tourism, Wildlife and Antiquities P.O. Box 4241, 2 nd Floor, Rwenzori Towers Email: ps@tourism.go.ug , www.tourism.go.ug Tel: 256200780400	Director, Population and Social Statistics Uganda Bureau of Statistics Statistics House, Plot 9, Colville Street Box 7186, Kampala Uganda Email: ubos@ubos.org , www.ubos.org Fax: +256-414- 237553 Telephone +0414-706-000
--------------------------------------------------------------------------------------------------------------------------------------------------------------------------------------------------------------------------------------------------------------------------------------------------------------------------------	------------------------------------------------------------------------------------------------------------------------------------------------------------------------------------------------------------------------------------------------------------------------------------------------------------------------

QUESTION 1. ACCOMMODATION/ESTABLISHMENT

NAME:.....

ESTCode_ _ _ _

QUESTION 1a. GPS LOCATION

Coordinates Northings

Eastings

QUESTION 2. LOCATION OF FACILITY/ESTABLISHMENT

0000	IDENTIFICATION PARTICULARS		FOR OFFICE USE ONLY	
A.	District:		<input type="text"/>	<input type="text"/>
B.	County:		<input type="text"/>	
C.	Sub County/Division:		<input type="text"/>	<input type="text"/>
D.	Parish/Ward:		<input type="text"/>	<input type="text"/>
E.	LC1/Village		<input type="text"/>	<input type="text"/>
F	Road/ Street:			
G	Plot No			
H	Hotel Email			
I	Name of contact person			
J	Designation			
K	Telephone Contacts			

QUESTION 3. TYPE OF ESTABLISHMENT: (See code list below)

01=Town Hotel 02=Vacation Hotel 03=Motel 04=Lodge 05=Cottage
 06= Tented Camp 07= Guest House 08= Apartment 09= Hostel/Dormitory
 10= Others

QUESTION 4a. DOES THE ESTABLISHMENT OFFER THE FOLLOWING SERVICES:
(Read the services below)

No.	Service	1=Yes 2=No	No.	Service	1=Yes 2=No
A.	Bed and Breakfast		I	Parking for vehicles	
B.	Conference facilities		J	Business centre (internet, typing, photocopying services)	
C.	Bar		K	Shopping facilities	
D.	Steam bath/Sauna		L	Swimming pool	
E.	Gym/Aerobics		M	Room service	
F.	Restaurant		N	Tour and Travel Desk/Services	
G.	Shuttle Services		O	Gardens	
H.	Outside Catering		P	Other Services (Please Specify.....)	

QUESTION 4b: 1f Yes to Questn 4a(C), Please record the number of Bar(s) in [Name] accommodation Facility?

QUESTION 4c: 1f Yes to Questn 4a (I), Please record the number of parking lots in [Name] accommodation Facility?

QUESTION 4d: 1f Yes to Questn 4a (B), Please record the number of Conference Halls/Rooms in [Name] accommodation Facility?

QUESTION 4e: what is the maximum sitting capacity of each of Conference Hall/Room mentioned in 4d above?

Conference Hall/Room	Room1	Room2	Room3	Room4	Room5	Room6	Room7
Name of Conference							
Max Sitting Capacity							

QUESTION 4f: How many bookings for Meetings, Incentives, Conferences & Exhibitions (Events) did you make in the month of:

Month	Number of bookings (include even that did not happen)			How many of these were cancelled?	How many persons were expected in total?
	Meetings	Conferences	Exhibitions		
January 2020					
February 2020					
March 2020					
April 2020					
May 2020					
June 2020					
July 2020					
August 2020					
September 2020					
October 2020					
November 2020					
October 2020					

QUESTION 5: 2020 EMPLOYMENT: (For the month of January)

Employment Category:	Nationals		Non Nationals		Total	
	Male	Female	Male	Female	Male	Female
Management						
Front Office						
Foods and Beverages						
House keeping						
Trainees (Interns)						
Total						

QUESTION 6a: ROOMS AND BEDS AVAILABLE:

How many rooms and beds does this Establishment have in total?

Rooms	<input type="text"/>	<input type="text"/>	<input type="text"/>
Beds	<input type="text"/>	<input type="text"/>	<input type="text"/>

QUESTION 6b: ACCOMMODATION:

Accommodation Type	Total number available in the months of					
	Rooms					
	(consider only temporary accommodation)					
	2020					
	Jan (*31 days)	Feb (*29 days)	Mar (*31 days)	Apr (*30 days)	May (*31 days)	Jun (*30 days)
A. Single Room						
B. Double Room						
C. Twin Room						
D. Cottage Room						
E. Suite Room						
F. Hostel/Dormitory Room						
G. Camp Site Room						
H. Apartment Room						
I. Presidential Suite						
J. Other (specify).....						

Note: Rooms/Beds for accommodation refers to room/beds that are available for temporary accommodation excludes bathrooms, kitchen room and other rooms/beds used for staff accommodation

QUESTION 6b: ACCOMMODATION (Cont'd)

Accommodation Type	Total number available in the months of					
	Beds					
	<i>(consider only temporary accommodation)</i>					
	2020					
	Jan (*31 days)	Feb (*29 days)	Mar (*31 days)	Apr (*30 days)	May (*31 days)	Jun (*30 days)
A. Single Bed						
B. Double Bed						
C. Twin Beds						
D. Cottage Bed						
E. Suite Bed						
F. Hostel/Dormitory Bed						
G. Camp Site Bed						
H. Apartment Bed						
I. Presidential Suite						
J. Other (specify).....						

Note: Rooms/Beds for accommodation refers to room/beds that are available for temporary accommodation excludes bathrooms, kitchen room and other rooms/beds used for staff accommodation

QUESTION 6c: ACCOMMODATION

Accommodation Type	Total sold out/occupied in the months of					
	Rooms					
	(consider only temporary accommodation)					
	2020					
	Jan (*31 days)	Feb (*29 days)	Mar (*31 days)	Apr (*30 days)	May (*31 days)	Jun (*30 days)
A. Single Room						
B. Double Room						
C. Twin Room						
D. Cottage Room						
E. Suite Room						
F. Hostel/Dormitory Room						
G. Camp Site Room						
H. Apartment Room						
I. Presidential Suite						
J. Other (specify).....						

QUESTION 6c: ACCOMMODATION (Cont'd)

Accommodation Type	Total sold out/occupied in the months of					
	Beds					
	(consider only temporary accommodation)					
	2020					
	Jan (*31 days)	Feb (*29 days)	Mar (*31 days)	Apr (*30 days)	May (*31 days)	Jun (*30 days)
A. Single Room						
B. Double Room						
C.Twin Room						
D.Cottage Room						
E.Suite Room						
F.Hostel/Dormitory Room						
G.Camp Site Room						
H. Apartment Room						
I. Presidential Suite						
J.Other (specify).....						

QUESTION 6d: PERCENTAGE OF GUESTS:

Guests Accommodated	Percentage (2020)											
	Jan	Feb	Mar	Apr	May	Jun	Jul	Aug	Sep	Oct	Nov	Dec
Foreign												
Local												
Total	100	100	100	100	100	100	100	100	100	100	100	100



MINISTRY OF TOURISM, WILDLIFE AND ANTIQUITIES

P.O. Box 4241, Kampala, Uganda

Tel: 0200 780400/0200780402

Email: ps@tourism.go.ug

Website: www.tourism.go.ug